

RHODE ISLAND Rapid PACE

Rapid Property Assessment and Coastal Exposure

What is Rapid PACE?

Rapid PACE is a coastal hazards screening tool that compiles data from several publically available *risk assessment tools*. Looking at conditions today and those of the future, Rapid PACE provides a site-specific view of potential exposure to various coastal hazards.

Rapid PACE will:

- Examine current and future storm scenarios, incorporating sea level rise.
- Examine effects of marsh migration due to rising sea levels.
- Determine if coastal erosion is a threat to the property.
- Provide a summary report and maps reviewing the impacts.



Rhode Island Sea Grant

Rapid PACE Risk Assessment Tools

- CRMC Water Type
- DEM Critical Resource Management Area (CRA)
- Coastal Freshwater Wetlands Jurisdiction
- Shoreline Erosion maps
- Rhode Island Floodplain Mapping Tool
- U.S. Fish & Wildlife Service Coastal Barrier Resource System (CBRS)
- STORMTOOLS
- Hurricane Evacuation Maps
- Sea Level Affecting Marsh Models (SLAMM)
- Sea Level Rise and Transportation Fact Sheets

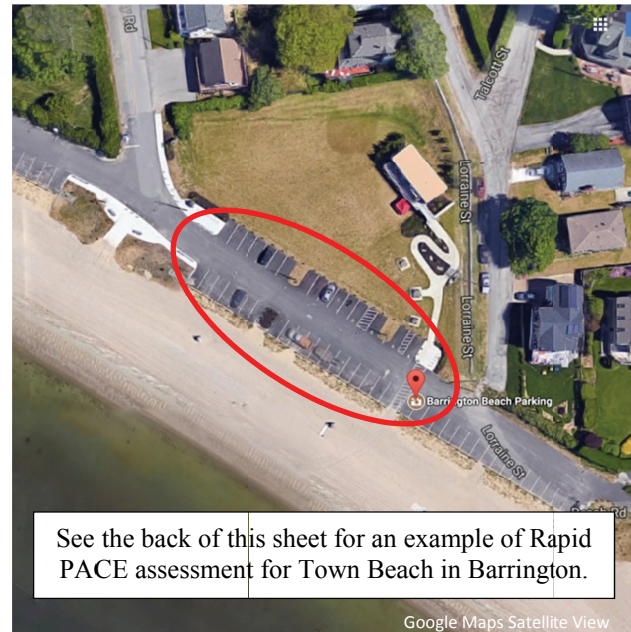
Who can use Rapid PACE?

Municipal Officials

Use the Online request form to connect with our Rapid PACE team. We will provide a site-specific summary of maps showing exposure to coastal hazards, typically within 48-hours.

General Public

Each of the tools used in a Rapid PACE assessment can be found online.

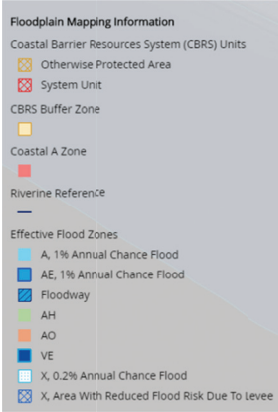


See the back of this sheet for an example of Rapid PACE assessment for Town Beach in Barrington.

Google Maps Satellite View



United States Department of Agriculture
National Institute of Food and Agriculture



The Floodplain Mapping Tool shows that the beach lies within the VE17 FEMA flood zone, described as “Coastal areas with a 1% or greater chance of flooding and an additional hazard associated with storm waves... having a 26% chance of flooding over the life of a 30-year mortgage.” (CRMC RI Coastal Property Guide)

Depth to Flooding



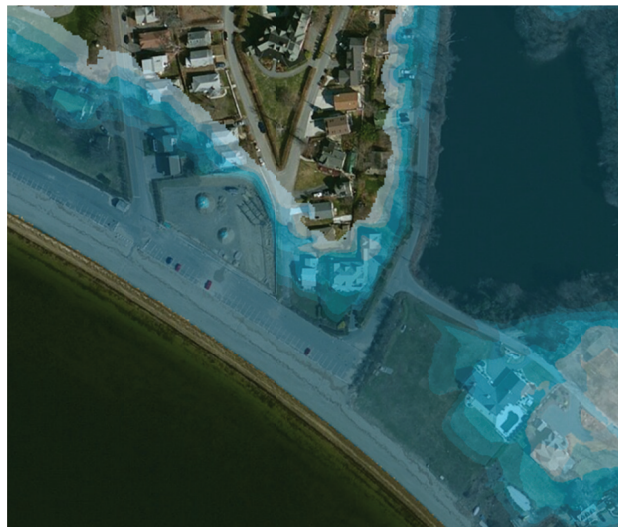
STORMTOOLS maps indicate that the property may be inundated by 8 or more feet of water during a **100-year storm**.



Depth to Flooding



STORMTOOLS maps indicate that a **100-year return period storm with 3 feet of sea level rise**, could put the site under 17 feet of water in the future.



Case Study:

The site: A Rapid PACE report was requested by the Barrington Planner for the Town Beach property on Beach Road.

What can we learn from this Rapid PACE Assessment?

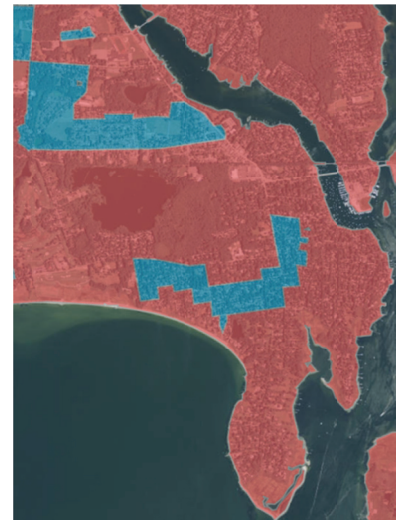
In addition to the maps shown here, we can learn important information about the site such as:

- Parts of the site are within the 200' contiguous area landward of a coastal feature; therefore, some activities are subject to regulation by CRMC.
- The closest waters to the site are categorized by CRMC as Type 1—Conservation Areas.
- Shoreline erosion has not seriously impacted the site since record-keeping began in 1939.

Evacuation Zone



The site is within **Flood Evacuation Zone A**. This zone is recommended to be evacuated prior to category 1 and 2 hurricanes.



LEARN MORE

View the tools or submit municipal requests for a Rapid PACE Assessment: <http://www.beachsamp.org/relatedprojects/pace/>

Explore more of Rhode Island's Resilience Tools: http://www.crc.uri.edu/activities_page/resilience-tools/

Contact: Christopher Condit, URI Coastal Resources Center, RI Sea Grant • 401.874.6489 • chris.condit@crc.uri.edu