

R.I. Coastal Resources Management Council

R.I. Ocean Special Area Management Plan

*Advancing marine spatial planning
through research and public input*



**R.I. COASTAL RESOURCES MANAGEMENT COUNCIL
UNIVERSITY OF RHODE ISLAND COASTAL RESOURCES CENTER
RHODE ISLAND SEA GRANT**

The Ocean SAMP Team

About the R.I. Coastal Resources Management Council

The R.I. Coastal Resources Management Council (CRMC) is charged with preserving, protecting, developing, and where possible, restoring the state's coastal resources. The preservation and restoration of ecological systems are CRMC's primary guiding principles, and its primary purpose is long-range integrated planning. CRMC is a management agency with regulatory functions, including undertaking planning, adopting policies and regulations, and issuing permits.



About the University of Rhode Island

The University of Rhode Island, the state's Land, Sea, and Urban Grant public research institution, is the only public institution in Rhode Island offering undergraduate, graduate, and professional students the distinctive educational opportunities of a major research university. URI's education, research, and outreach programs serve Rhode Island and beyond. URI researchers have a major impact on issues that affect the region, the nation, and the world. URI outreach and extension programs engage in coastal resources management internationally and have played a leadership role in the creation of Rhode Island's Special Area Management Plans.

About Rhode Island Sea Grant

Rhode Island Sea Grant has a 40-year history of funding research on critical ocean and coastal ecosystem issues as well as running high-quality extension, legal, and education programs that focus on two main program areas—Sustainable Coastal Communities and Sustainable Fisheries. Located at the University of Rhode Island Graduate School of Oceanography, the program is one of over 30 that make up the National Sea Grant College Program, a part of the National Oceanic & Atmospheric Administration.



R.I. Coastal Resources Management Council Special Area Management Plans

Coastal Planning “Tool with Teeth”: The Special Area Management Plan

Special Area Management Plans, or SAMPs, are federally recognized management and regulatory tools that promote ecosystem-based management as well as reasonable coastal-dependent economic activity. With support from URI, CRMC has worked with stakeholders to create six Rhode Island SAMPs.



The Rhode Island Ocean SAMP: Science Assists in the Public Effort to Define Ocean Uses



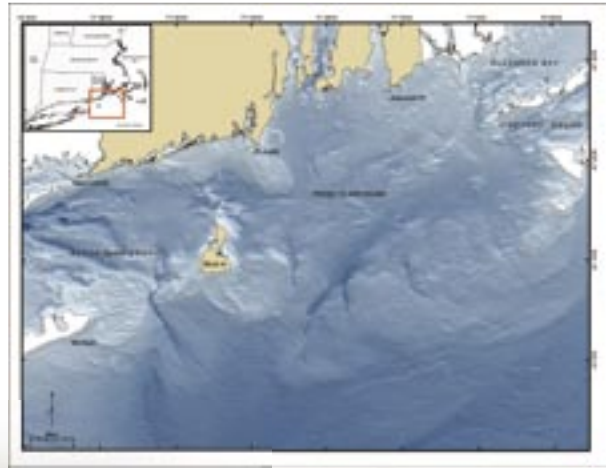
The Ocean SAMP will serve as a federally recognized coastal management and regulatory tool. Using the best available science, the SAMP will be an adaptive planning tool that promotes a balanced and comprehensive ecosystem-based management approach to the development and protection of Rhode Island's ocean-based resources. It is the intent of the SAMP to contribute to the mitigation of, and adaptation to, global climate change as well as facilitate coordination between state and federal agencies and the people of Rhode Island.

The Ocean SAMP Study Area

The Ocean SAMP study boundary includes approximately 1,500 square miles of portions of Block Island Sound, Rhode Island Sound, and the Atlantic Ocean. The study area includes both state and federal waters and abuts the state waters of Massachusetts, Connecticut, and New York.

About the Ocean SAMP Area

Migratory fish, marine mammals, birds, and sea turtles travel throughout this region, while vessels transport people and cargo to ports and harbors throughout the area. The waters support commercial and recreational fisheries, and are used by thousands of recreational boaters. The region continues to experience increased marine transportation traffic, the impacts of global warming, and the calls for new uses of offshore waters such as for renewable energy infrastructure.



THE OCEAN SAMP STUDY AREA



Ocean SAMP Topics

The research and planning process incorporates the following topics, which are key attributes and issues in the Ocean SAMP area:

- Ecology
- Fishing
- Wildlife & Habitats
- Recreation & Tourism
- Cultural & Historic Resources
- Infrastructure
- Marine Transportation
- Physical Environment
- Policy & Governance
- Global Climate Change
- Marine Spatial Planning

SAMP Goals

- Foster a properly functioning ecosystem that is both ecologically sound and economically beneficial
- Promote and enhance existing uses
- Encourage marine-based economic development that meets the aspirations of local communities and is consistent with the state's overall economic development needs and goals, including offshore renewable energy infrastructure
- Build a framework for coordinated decision-making between state and federal management agencies

Project Team

This project is led by the CRMC with URI and Rhode Island Sea Grant. Through the Ocean SAMP stakeholder process, local communities, commercial and recreational fisheries representatives, public advocacy groups, federal and state officials, experts in a variety of fields, and members of the general public have been able to actively engage in the evolution of the SAMP.

Ocean SAMP Management Team

Project Manager: **Grover Fugate**, Executive Director, R.I. Coastal Resources Management Council

Senior Advisor: **Dennis Nixon**, Associate Dean for Research & Administration, URI Graduate School of Oceanography

Senior Advisor: **Malcolm Spaulding**, URI Professor of Ocean Engineering

Co-Principal Investigator, Policy & Outreach: **Jennifer McCann**, Leader of the Sustainable Coastal Communities Program for Rhode Island Sea Grant and the URI Coastal Resources Center

Co-Principal Investigator, Data Acquisition: **Sam De Bow**, Manager of Research Operations and Special Projects, URI Graduate School of Oceanography

Ocean SAMP CRMC Subcommittee

The R.I. Coastal Resources Management Council Ocean SAMP Subcommittee oversees the Ocean SAMP project on behalf of the full council. **Members:** *Michael M. Tikoian (Chair), Paul Lemont (Vice Chair), Donald Gomez, David Abedon, Robert Driscoll*

CRMC Legal Counsel: *Brian Goldman*



This project is funded by the State of Rhode Island Office of Energy Resources, the R.I. Economic Development Corporation, the U.S. Department of Energy, and the Rhode Island Sea Grant College Program.

To learn more about the Rhode Island Ocean SAMP visit seagrant.go.uri.edu/oceansamp.