



UMass | Dartmouth

UNIVERSITY OF MASSACHUSETTS DARTMOUTH

Habitat Characterization of Wind Energy Areas in Southern New England

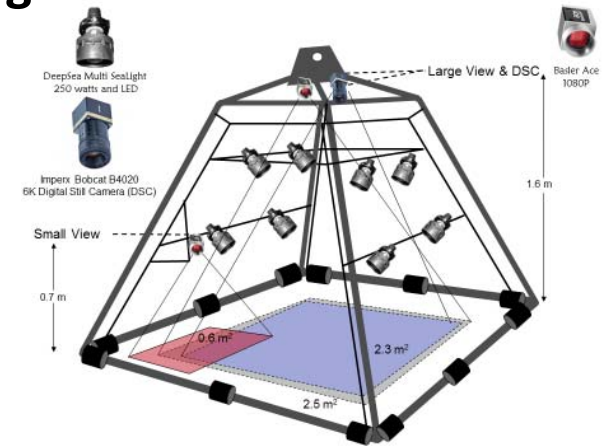
Kevin D.E. Stokesbury and N. David Bethoney



Southern New England Offshore Wind Energy Science Forum
December 11-12 2017, URI Narragansett Bay Campus



Drop Camera Pyramid – Imperx Digital Still



Large View (2.5 m²)



Small View (0.6 m²)

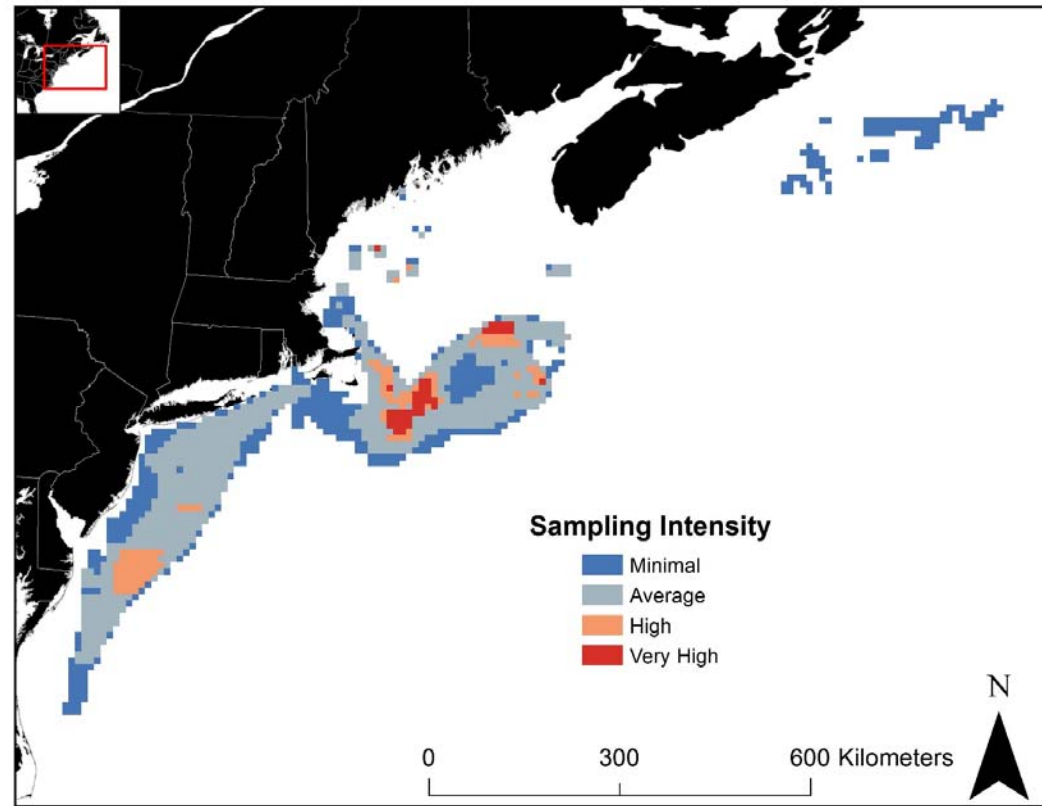
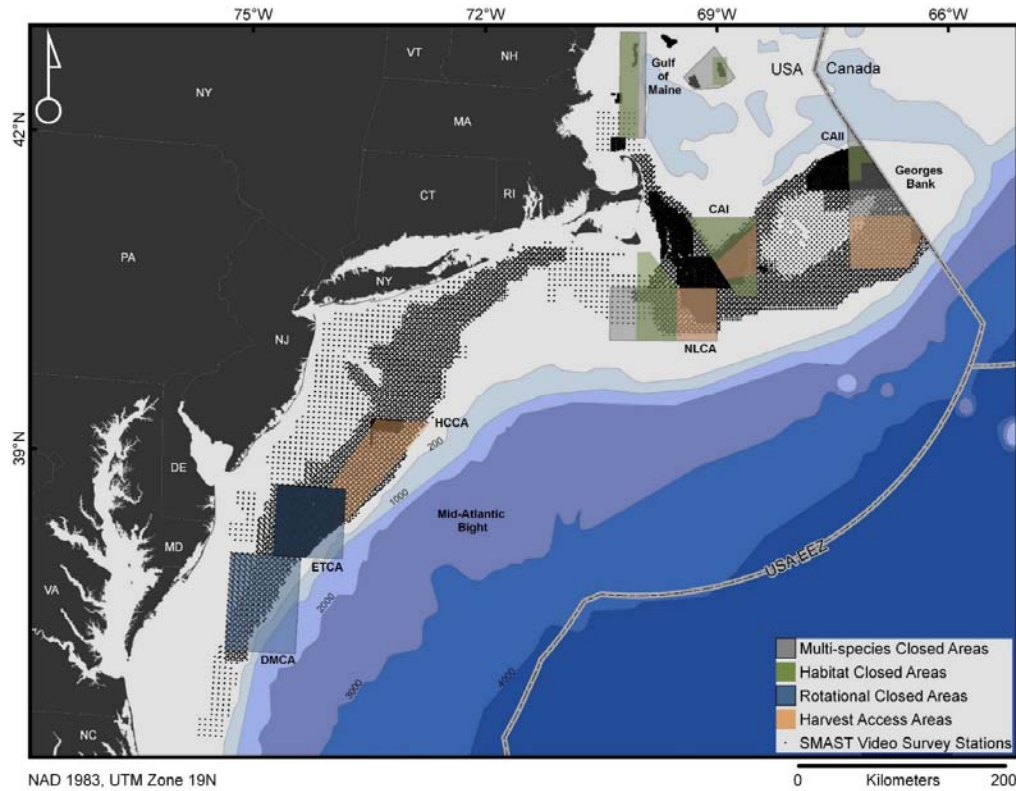


Digital Still Camera (2.3 m²)

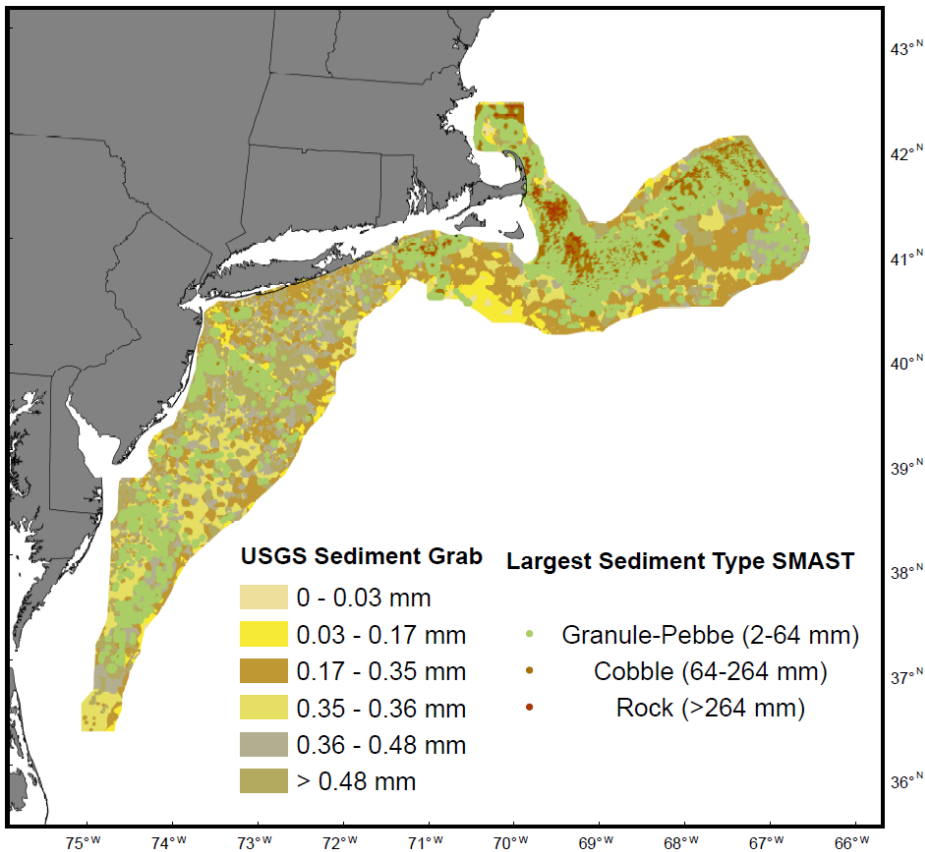


UMass | Dartmouth

UNIVERSITY OF MASSACHUSETTS DARTMOUTH



Southern New England Offshore Wind Energy Science Forum
December 11-12 2017, URI Narragansett Bay Campus



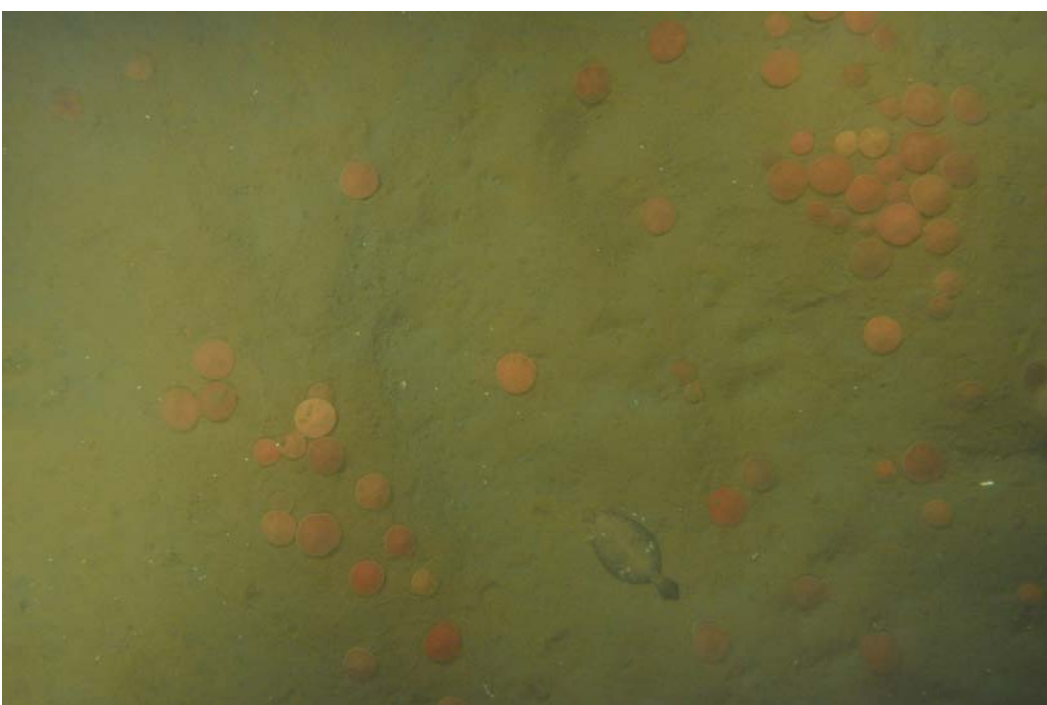
The percentage of quadrats containing each substrate type in the windfarm lease locations (WF) in 2012 (n = 896) and 2013 (n = 903) compared to the entire 2012 continental shelf survey (CS, n = 9588), Georges Bank (GB, n = 4916) and the Mid-Atlantic (MA, n = 4672).

	2012	2013			
%	WF	WF	CS	GB	MA
Sand	80.9	99.0	67.8	51.6	77.9
Sand ripple	19.1	1.0	31.6	47.5	21.7
Shell debris	67.3	59.2	94.3	96.2	96.4
Silt	82.9	93.1	50.0	18.8	68.9
Gravel	5.3	5.1	11.5	22.5	4.6
Cobble	2.9	4.0	4.5	9.7	1.0
Rock	2.9	3.7	1.6	3.1	0.5

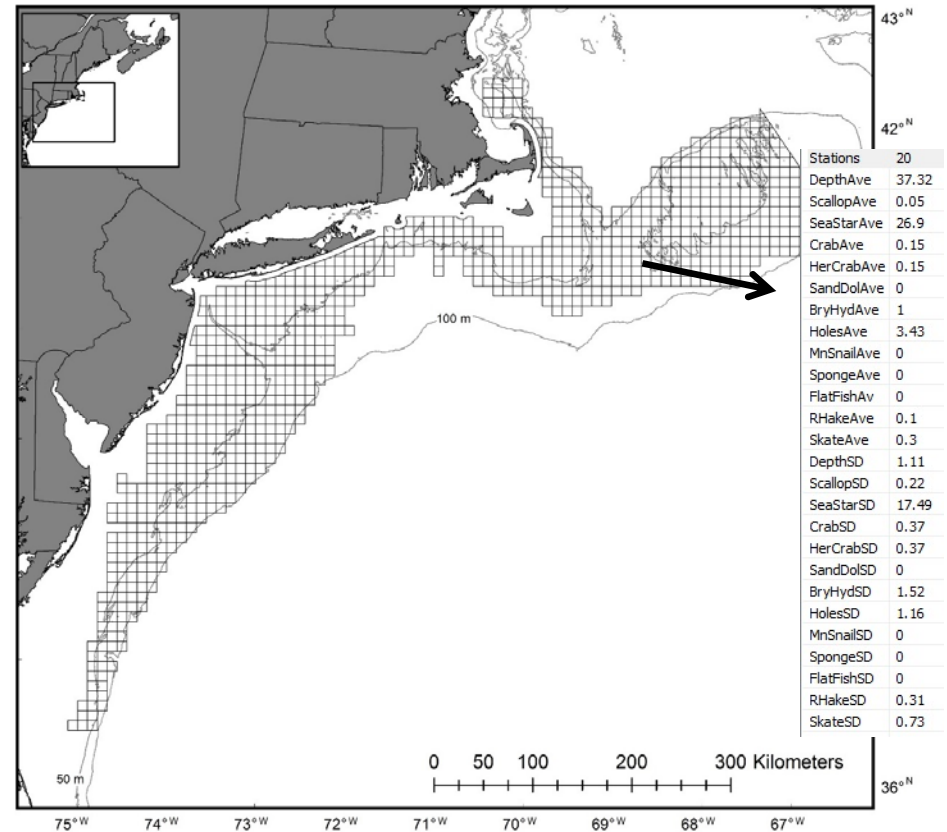
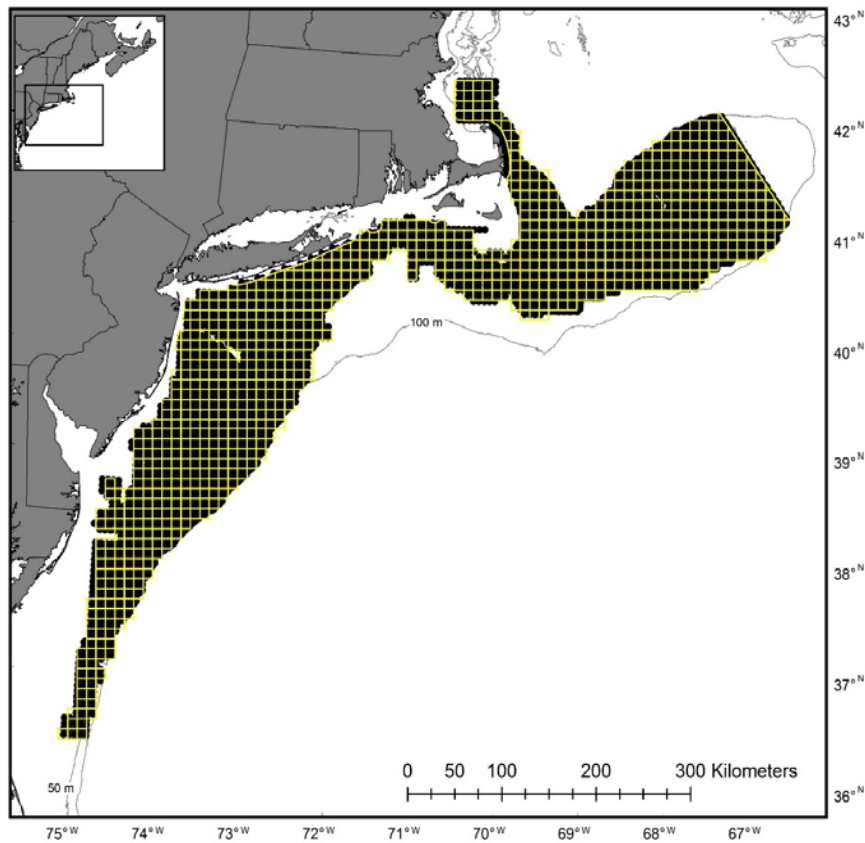


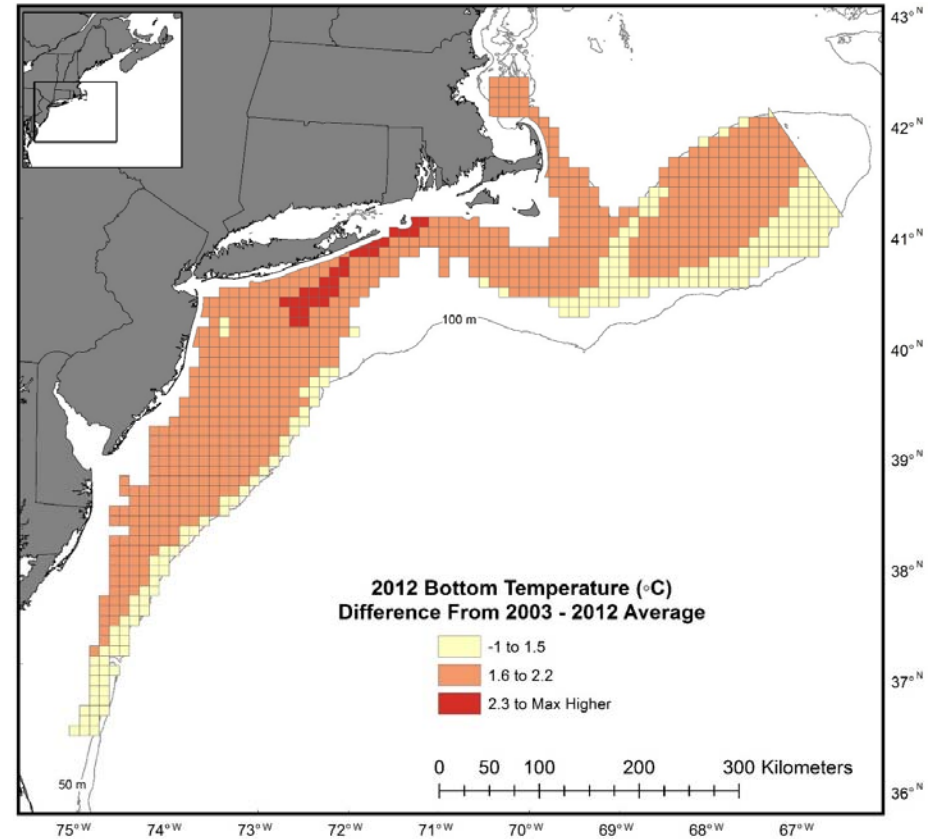
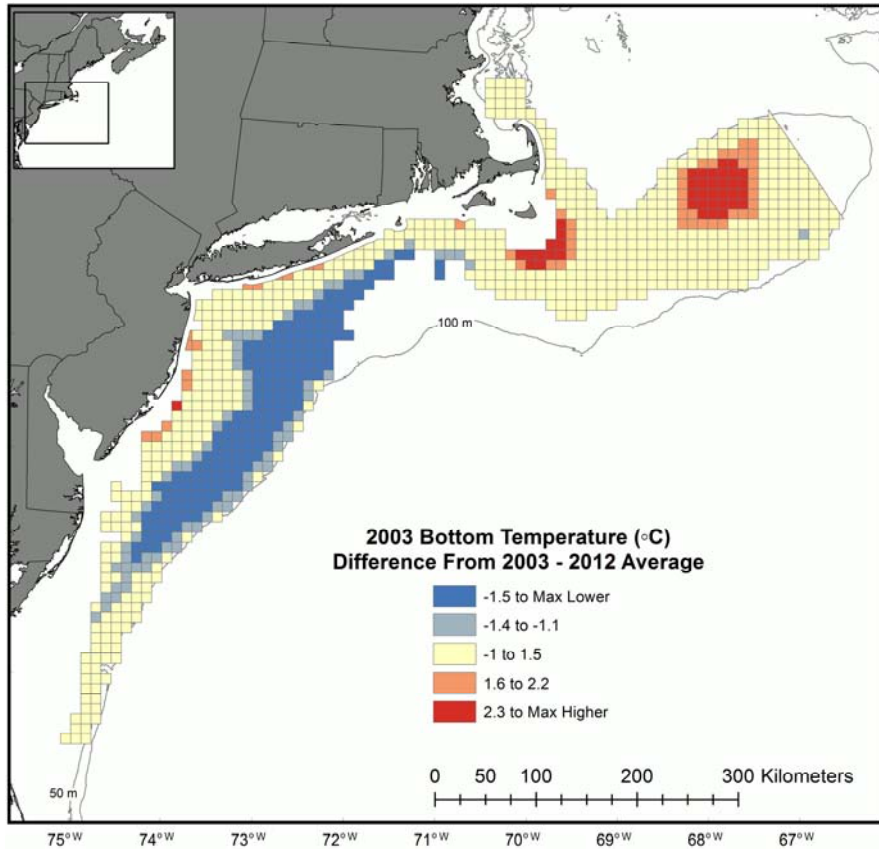
UMass | Dartmouth

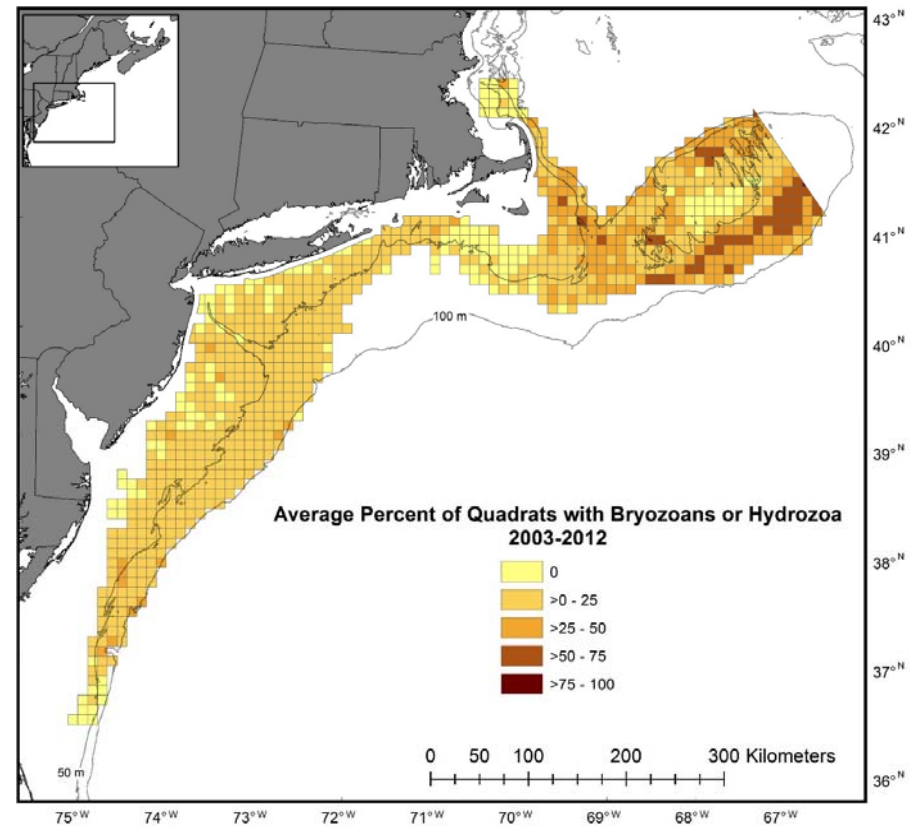
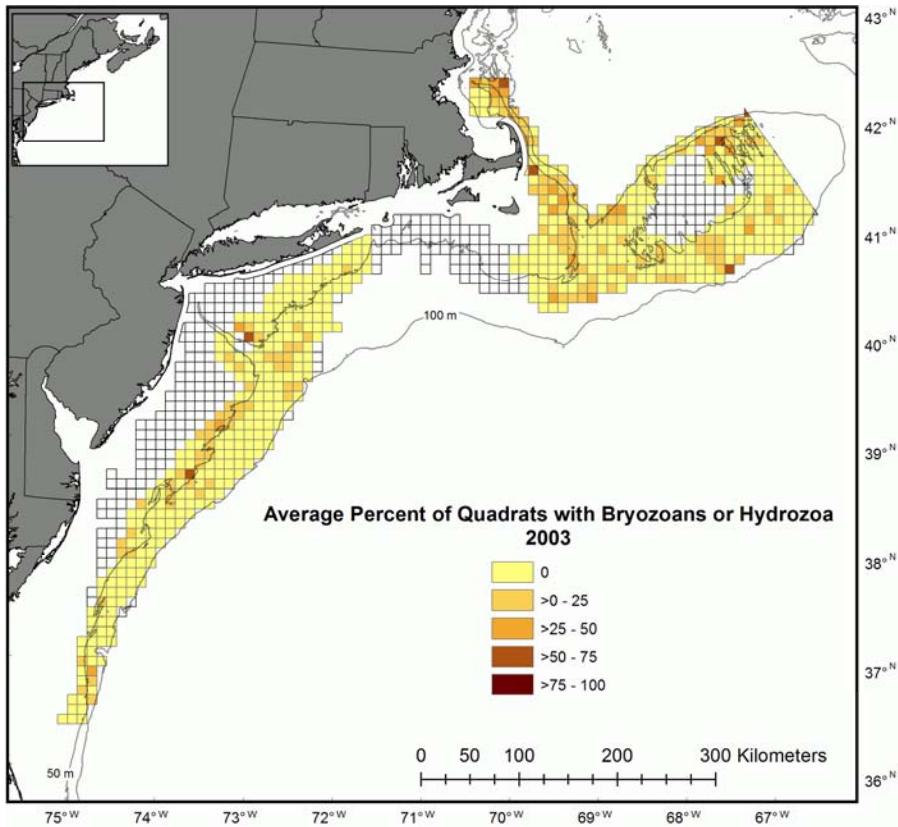
UNIVERSITY OF MASSACHUSETTS DARTMOUTH

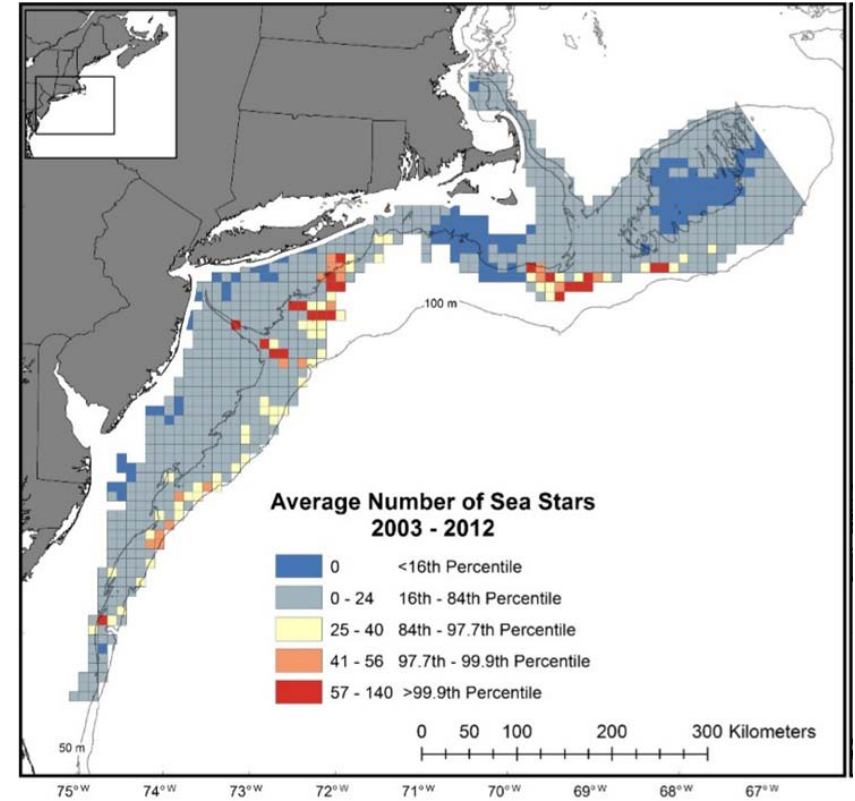
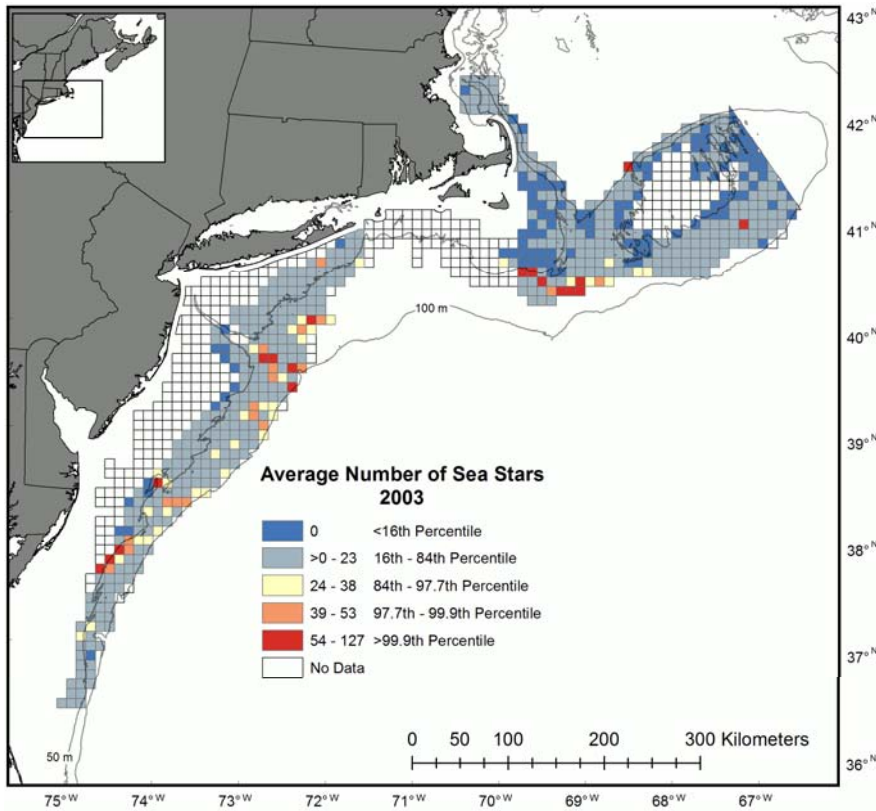


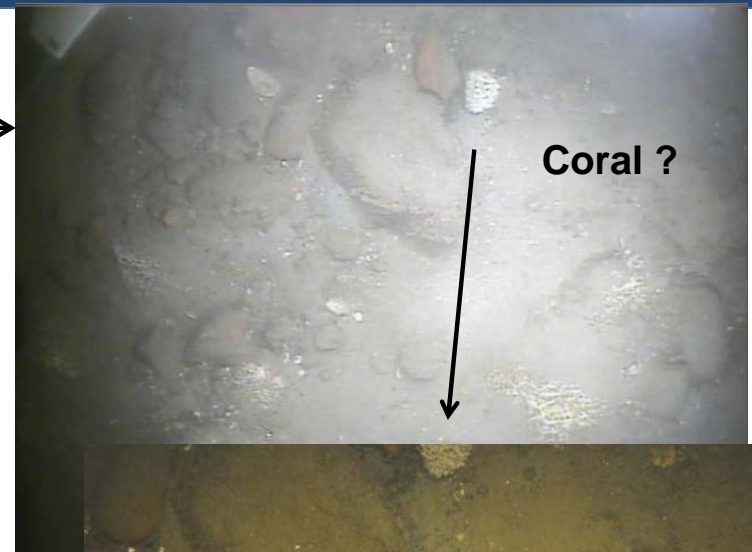
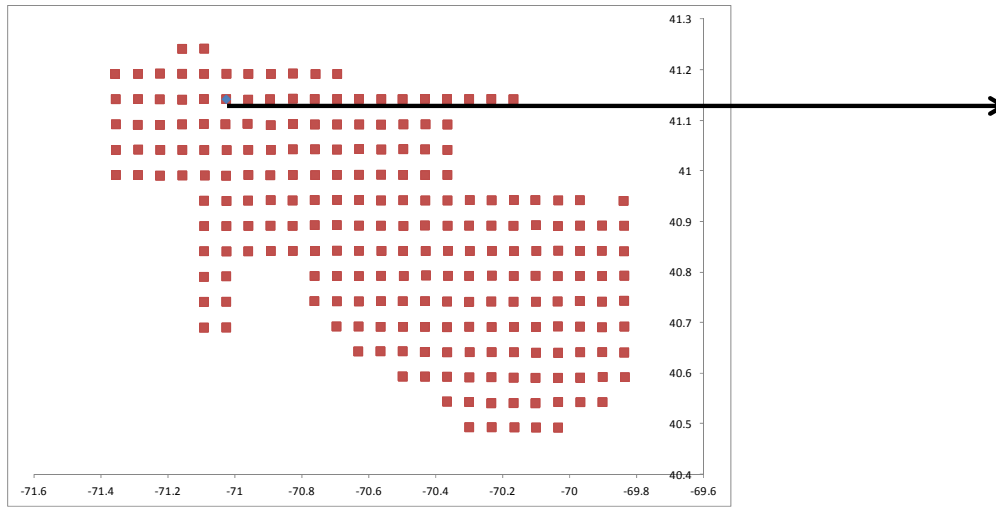
**Southern New England Offshore Wind Energy Science Forum
December 11-12 2017, URI Narragansett Bay Campus**



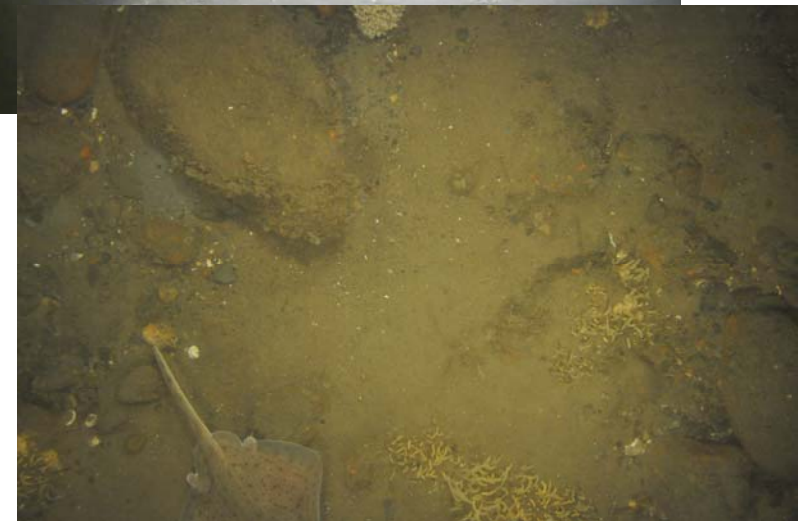








species	2012	2013	2012%	2013%	sim. Index	% Diff
holes	185	49	28.3	11.8	11.8	16.5
sandDollar	178	105	27.2	25.2	25.2	2.0
seaStars	69	24	10.6	5.8	5.8	4.8
skate	46	21	7.0	5.0	5.0	2.0
hake	31	5	4.7	1.2	1.2	3.5
scallops	25	15	3.8	3.6	3.6	0.2
bHydra	23	101	3.5	24.3	3.5	-20.8
sum	654	416	100	100	64.9	

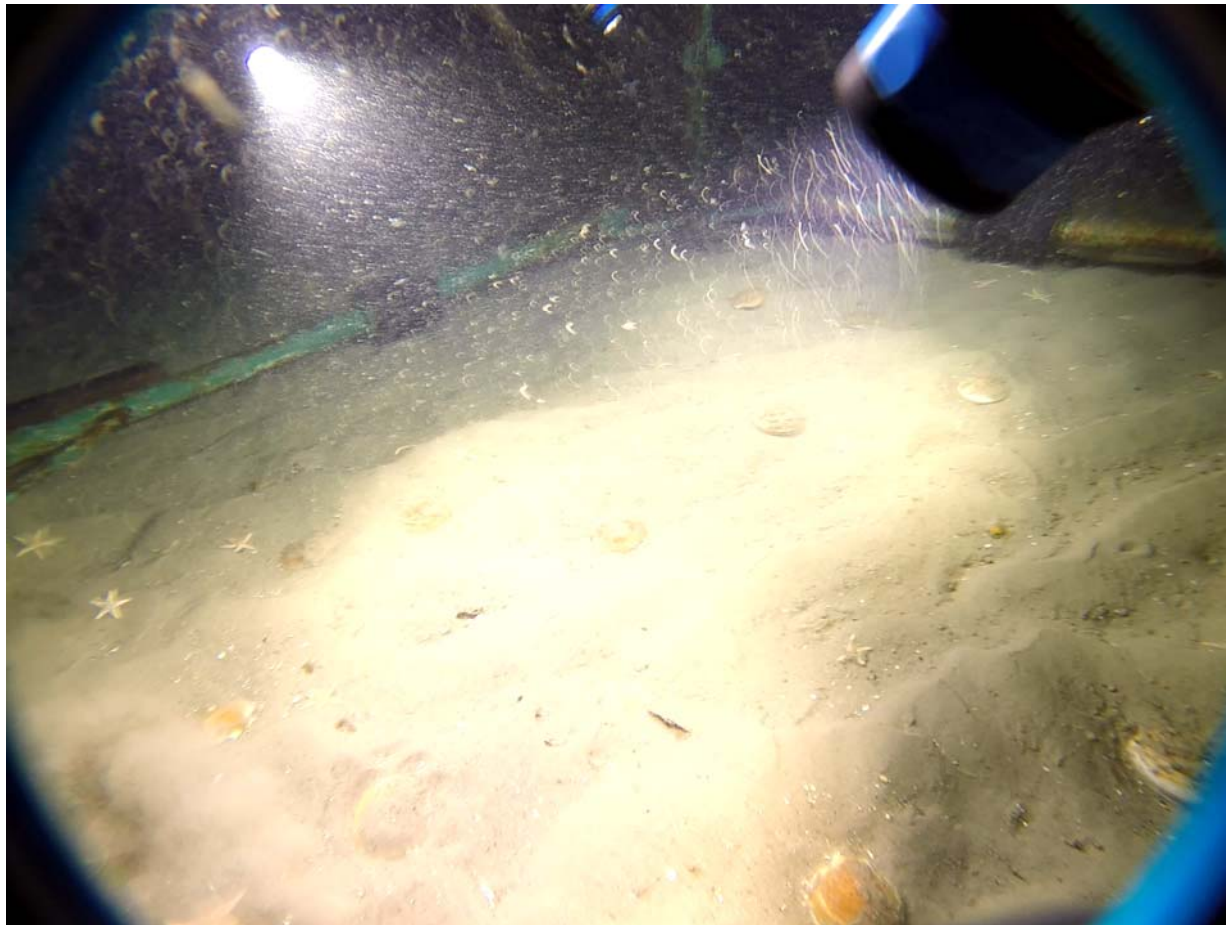


Southern New England Offshore Wind Energy Science Forum
December 11-12 2017, URI Narragansett Bay Campus



UMass | Dartmouth

UNIVERSITY OF MASSACHUSETTS DARTMOUTH



**Southern New England Offshore Wind Energy Science Forum
December 11-12 2017, URI Narragansett Bay Campus**