



USAID | GHANA
FROM THE AMERICAN PEOPLE

SUSTAINABLE FISHERIES MANAGEMENT PROJECT (SFMP)

Woodlot Committee Meeting Report



JUNE, 2017

THE
UNIVERSITY
OF RHODE ISLAND
GRADUATE SCHOOL
OF OCEANOGRAPHY



This publication is available electronically in the following locations:

The Coastal Resources Center

http://www.crc.uri.edu/projects_page/ghanasfmp/

Ghanalinks.org

<https://ghanalinks.org/elibrary> search term: SFMP

USAID Development Clearing House

<https://dec.usaid.gov/dec/content/search.aspx> search term: Ghana SFMP

For more information on the Ghana Sustainable Fisheries Management Project, contact:

USAID/Ghana Sustainable Fisheries Management Project

Coastal Resources Center

Graduate School of Oceanography

University of Rhode Island

220 South Ferry Rd.

Narragansett, RI 02882 USA

Tel: 401-874-6224 Fax: 401-874-6920 Email: info@crc.uri.edu

Citation: Opari-Addor, J., Takyi, M. (2017). Report on Woodlot Committee Meeting. Ghana Sustainable Fisheries Management Project (SFMP). Narragansett, RI: Coastal Resources Center, Graduate School of Oceanography, University of Rhode Island and Central and Western Fish Mangers Improvement Association. GH2014_ACT095_CEWEFIA 9 pp.

Authority/Disclaimer:

Prepared for USAID/Ghana under Cooperative Agreement (AID-641-A-15-00001), awarded on October 22, 2014 to the University of Rhode Island, and entitled the USAID/Ghana Sustainable Fisheries Management Project (SFMP).

This document is made possible by the support of the American People through the United States Agency for International Development (USAID). The views expressed and opinions contained in this report are those of the SFMP team and are not intended as statements of policy of either USAID or the cooperating organizations. As such, the contents of this report are the sole responsibility of the SFMP team and do not necessarily reflect the views of USAID or the United States Government.

Cover photo: Woodlot plantation in Anlo (Photo by CEWEFIA)

Detailed Partner Contact Information:

USAID/Ghana Sustainable Fisheries Management Project (SFMP)
10 Obodai St., Mempeasem, East Legon, Accra, Ghana

Telephone: +233 0302 542497 Fax: +233 0302 542498

Maurice Knight	Chief of Party maurice@crc.uri.edu
Kofi Agbogah	Senior Fisheries Advisor kagbogah@henmpoano.org
Nii Odenkey Abbey	Communications Officer nii.sfmp@crcuri.org
Bakari Nyari	Monitoring and Evaluation Specialist hardinyari.sfmp@crcuri.org
Brian Crawford	Project Manager, CRC brian@crc.uri.edu
Ellis Ekekpi	USAID AOR (acting) eekekpi@usaid.gov

Kofi.Agbogah
kagbogah@henmpoano.org

Stephen Kankam
skankam@henmpoano.org
Hen Mpoano
38 J. Cross Cole St. Windy Ridge
Takoradi, Ghana
233 312 020 701

Andre de Jager
adejager@snvworld.org
SNV Netherlands Development Organisation
#161, 10 Maseru Road,
E. Legon, Accra, Ghana
233 30 701 2440

Donkris Mevuta
Kyei Yamoah
info@fonghana.org
Friends of the Nation
Parks and Gardens
Adiembra-Sekondi, Ghana
233 312 046 180

Thomas Buck
tom@ssg-advisors.com
SSG Advisors
182 Main Street
Burlington, VT 05401
(802) 735-1162

Victoria C. Koomson
cewefia@gmail.com
CEWEFIA
B342 Bronyibima Estate
Elmina, Ghana
233 024 427 8377

Lydia Sasu
daawomen@daawomen.org
DAA
Darkuman Junction, Kaneshie Odokor
Highway
Accra, Ghana
233 302 315894

For additional information on partner activities:

CRC/URI: <http://www.crc.uri.edu>
CEWEFIA: <http://cewefia.weebly.com/>
DAA: <http://womenthrive.org/development-action-association-daa>
Friends of the Nation: <http://www.fonghana.org>
Hen Mpoano: <http://www.henmpoano.org>
SNV: <http://www.snvworld.org/en/countries/ghana>
SSG Advisors: <http://ssg-advisors.com/>

ACRONYMS

CCM	Centre for Coastal Management
CEWEFIA	Central and Western Region Fishmongers Improvement Association
CRC	Coastal Resource Center
CSLP	Coastal Sustainable Landscape Project
DAA	Development Action Association
DFAS	Department of Fisheries and Aquatic Science
DMFS	Department of Marine Fisheries Sciences
DQF	Daasgift Quality Foundation
FtF	Feed the Future
GIFA	Ghana Inshore Fishermen's Association
GIS	Geographic Information System
GNCFC	Ghana National Canoe Fishermen's Council
HM	Hen Mpoano
ICFG	Integrated Coastal and Fisheries Governance
MESTI	Ministry of Environment Science and Technology
MOFAD	Ministry of Fisheries and Aquaculture Development
NDPC	National Development Planning Commission
NGOs	Non-Governmental Organizations
SFMP	Sustainable Fisheries Management Project
SMEs	Small and Medium Enterprises
SNV	Netherlands Development Organization
SSG	SSG Advisors
STWG	Scientific and Technical Working Group
UCC	University of Cape Coast
URI	University of Rhode Island
USAID	United States Agency for International Development
WARFP	West Africa Regional Fisheries Development Program

TABLE OF CONTENTS

CONTENTS

ACRONYMS.....	iii
TABLE OF CONTENTS.....	iv
LIST OF FIGURES	iv
INTRODUCTION	1
OBJECTIVES.....	1
OUTCOME.....	1
CHALLENGE.....	1
WAY FORWARD	1
THE ANLO CASSIA WOODLOT PLANTATION MANAGEMENT PLAN.....	2
GOALS\OBJECTIVES.....	2
To protect the mangrove from over-exploitation.....	2
To ensure sustainable harvesting and good practices	2
To serve as an alternate livelihood and source of income	2
RESOURCES	2
SUSTAINABILITY.....	3
BENEFICIARIES	3
APPENDIX 1	4

LIST OF FIGURES

Figure 1 Map on CEWEFIA Woodlot Plantation at Anlo.....	4
---	---

INTRODUCTION

The cassia plantation in Anlo, Shama District has seen much success from the start of the project to date; from land acquisition, seedling buying, land clearing and planting. This activity which falls under IR 4.2.2 work with women and youth in Anlo to manage woodlot plantation is a direct activity to ensure that fish is protected by protecting the mangrove (ecosystem of Anlo) thereby relating to the main project goal of rebuilding marine fishery stocks since the mangrove is spawning ground for some fish species.

OBJECTIVES

The main purpose of this meeting was to draw a management plan to guide the committee in managing the plantation.

To set up an executive committee to see to the day to day administration of the plantation.

OUTCOME

The meeting started with introductions, and purpose of meeting; Protection of the mangrove to ensure strengthening of the ecosystem and provision of livelihood support to woodcutters and charcoal burners of Anlo and environs. The meeting was divided into two parts; the first part was for voting of officers and the second was used to draw the management plan.

A three-member executive committee were voted into office, and made up of the Chairman, Secretary and Treasurer.

- Chairman – Nana Kojo Teni II.
- Secretary/Financial Secretary – Simon Atsiatorme.
- Treasurer – Elizabeth Koomson.

The committee was taken through the items of the plan:

- Ownership.
- Objectives (economic, social and environmental).
- Resources.
- Sustainability.
- Beneficiaries.

The meeting was participatory. All present gave their inputs and suggestions after which a draft plan was drawn.

CHALLENGE

The Planning Officer of Shama District Assembly could not make it to the meeting.

WAY FORWARD

The chief of Krobo promised to give more land to the youth to ensure more plantations.

He also promised to bring other documents for the land.

A forestry officer would be added to the committee.

The draft plan would be sent to the offices of the Regional Director of Forestry, the District Coordinating Director and Planning Officer of Shama and SFMP partners working on the Pra Estuary.

THE ANLO CASSIA WOODLOT PLANTATION MANAGEMENT PLAN

Property Owners: CEWEFIA, Krobo, Anlo Beach

Address: P. O. Box El 25, Elmina

Telephone: 0244278377

Community: Elmina

Country: Ghana

GOALS\OBJECTIVES

- To protect the mangrove from over-exploitation.
- To ensure sustainable harvesting and good practices.
- To serve as an alternate livelihood and source of income.

To protect the mangrove from over-exploitation

- The use of energy efficient stoves such as Ahotor stove would be promoted.
- The trees would be sold at a reasonable price per square measurement.

To ensure sustainable harvesting and good practices

- Weeding would be done twice a year.
- Dead seedlings/trees would be replanted and remaining portion of the land would also be planted.
- The whole community would serve as watchdogs to protect the woodlot.
- The first harvest would be in four years.

To serve as an alternate livelihood and source of income

- Permits will be issued before gaining access to the woodlot.
- Every member of the community is entitled to a maximum of 1 rope (1/9 acre).
- A community member is required to weed the portion where he/she cuts the trees.
- The members of the executive should be present when an allocation is being made.
- A member is allowed 2 months to cut his/her portion of the trees.
- A portion of the plantation would be reserved for youth alternate livelihood activities.
- An account would be opened by the three-member executive who will serve as sole dignitaries.
- The chairman and any other signatory can sign for withdrawals.
- Income realized would be given to a fund manager to invest for five years.

RESOURCES

Financial resources: USAID/SFMP sponsored project for five years. After the five years, income realized from sale of the woodlot would be used to fund activities by the community.

- Time.
- Equipment.
- Labor.
- Sustainability.

SUSTAINABILITY

Continued education of community members to understand the need to protect the mangrove, to ensure the balance in the natural resources of Anlo.

BENEFICIARIES

Scholarships to brilliant students.

APPENDIX 1

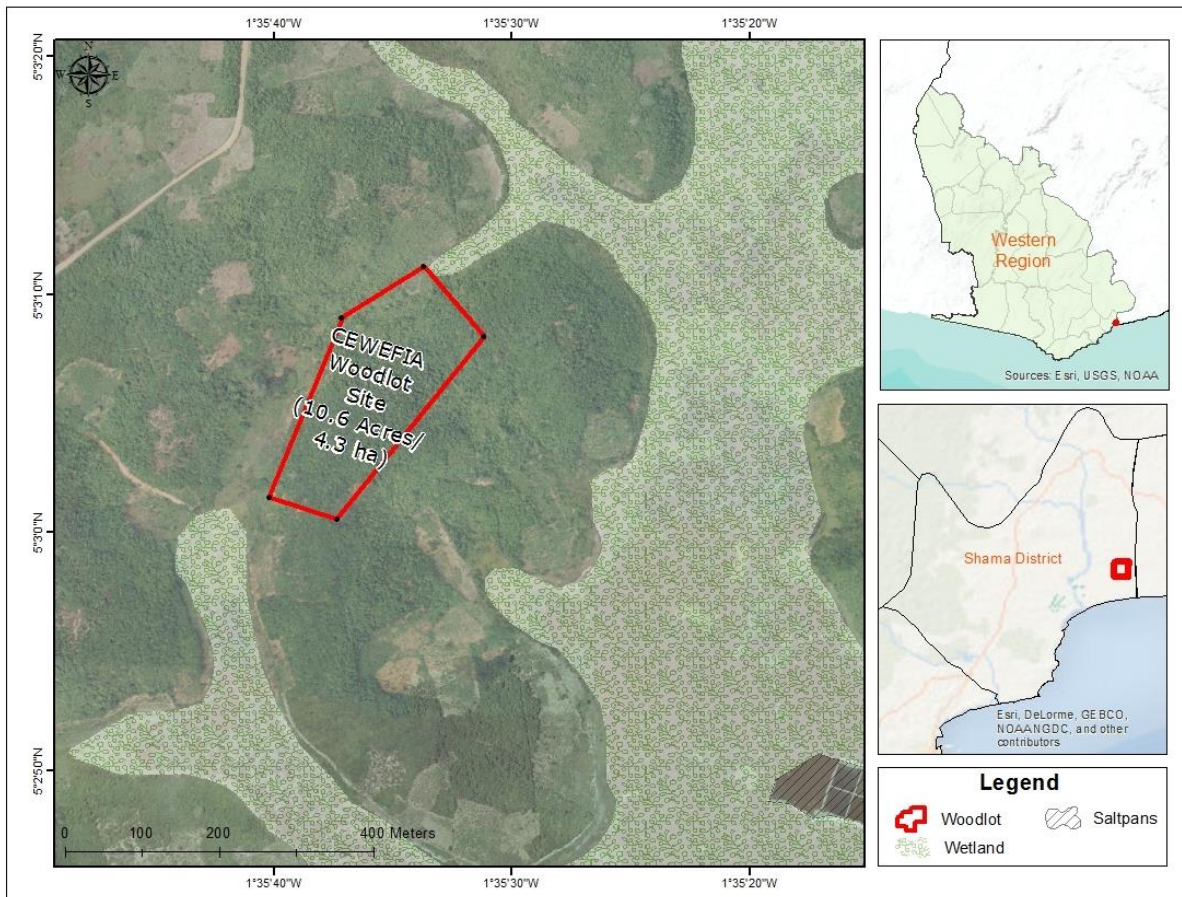


Figure 1 Map on CEWEFIA Woodlot Plantation at Anlo