



UMass | Dartmouth

UNIVERSITY OF MASSACHUSETTS DARTMOUTH

MA Fisheries and Windfarms

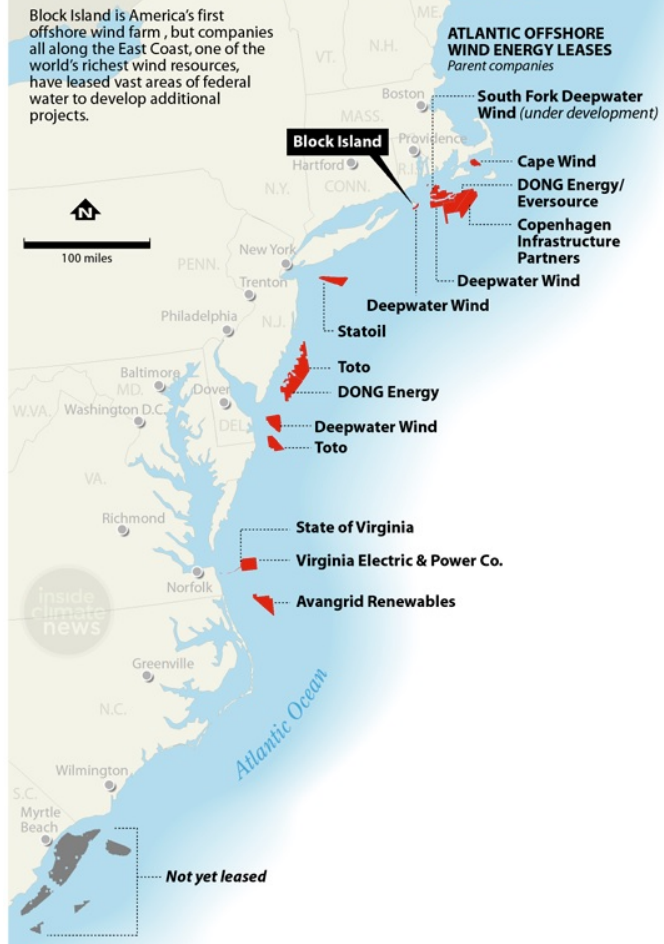
Kevin D.E. Stokesbury





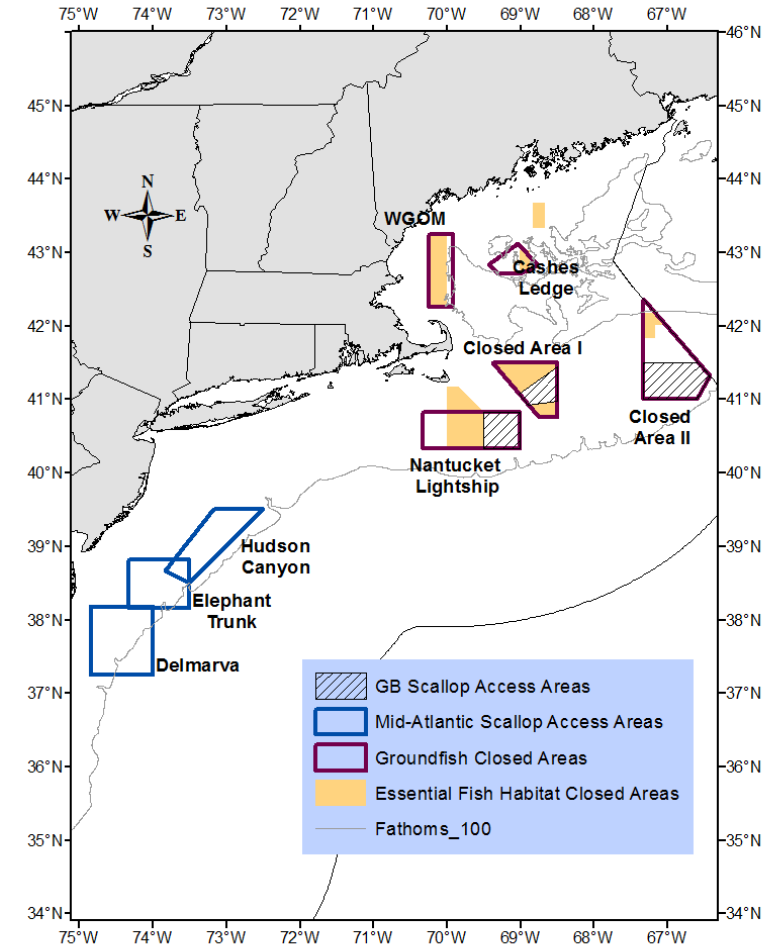
U.S. Offshore Wind Readies for Takeoff

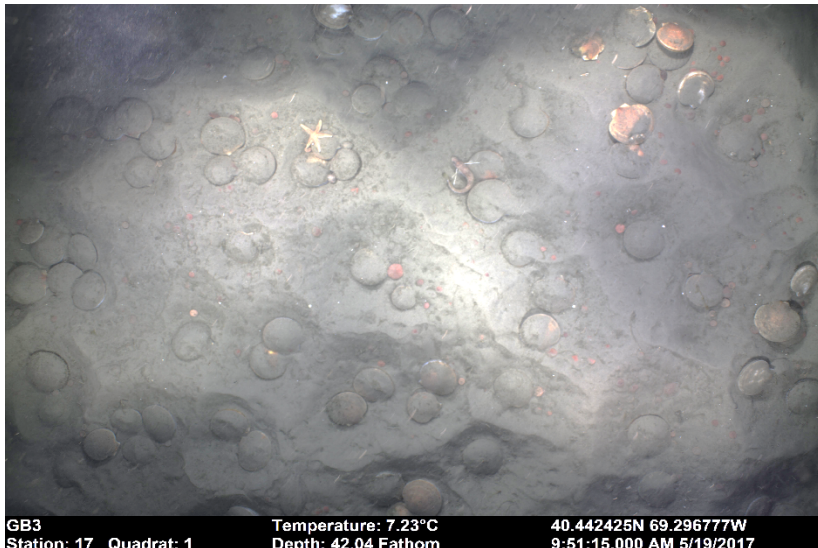
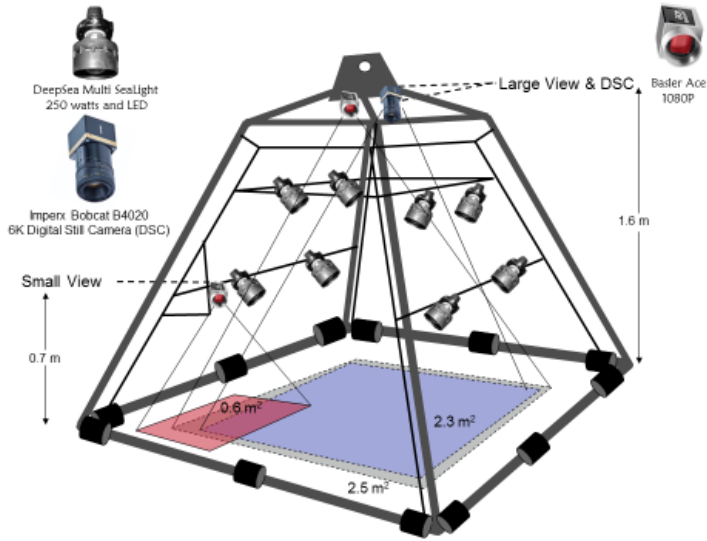
Block Island is America's first offshore wind farm, but companies all along the East Coast, one of the world's richest wind resources, have leased vast areas of federal water to develop additional projects.



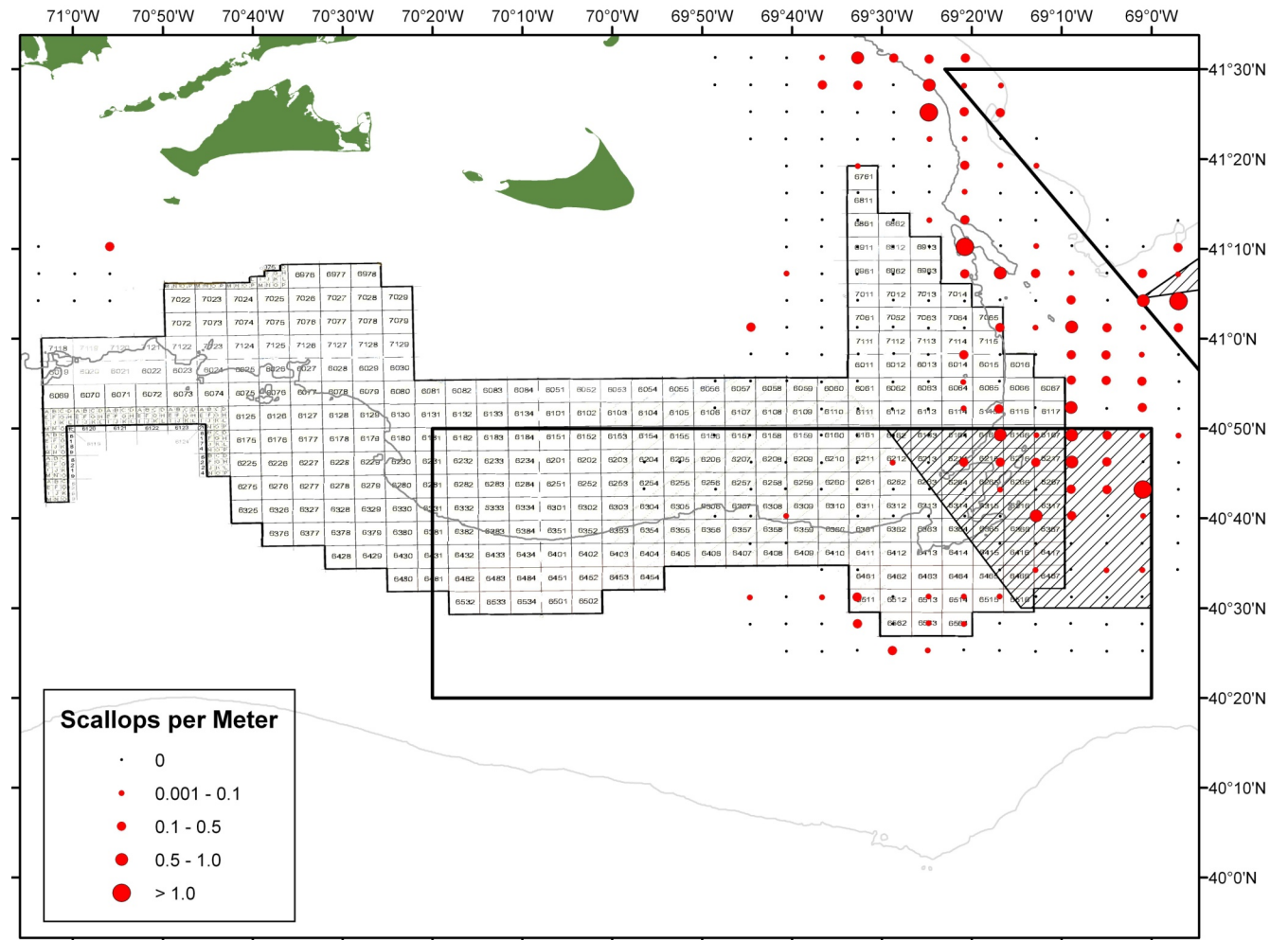
SOURCE: Bureau of Ocean Energy Management

Sustainable Energy and Sustainable Fisheries



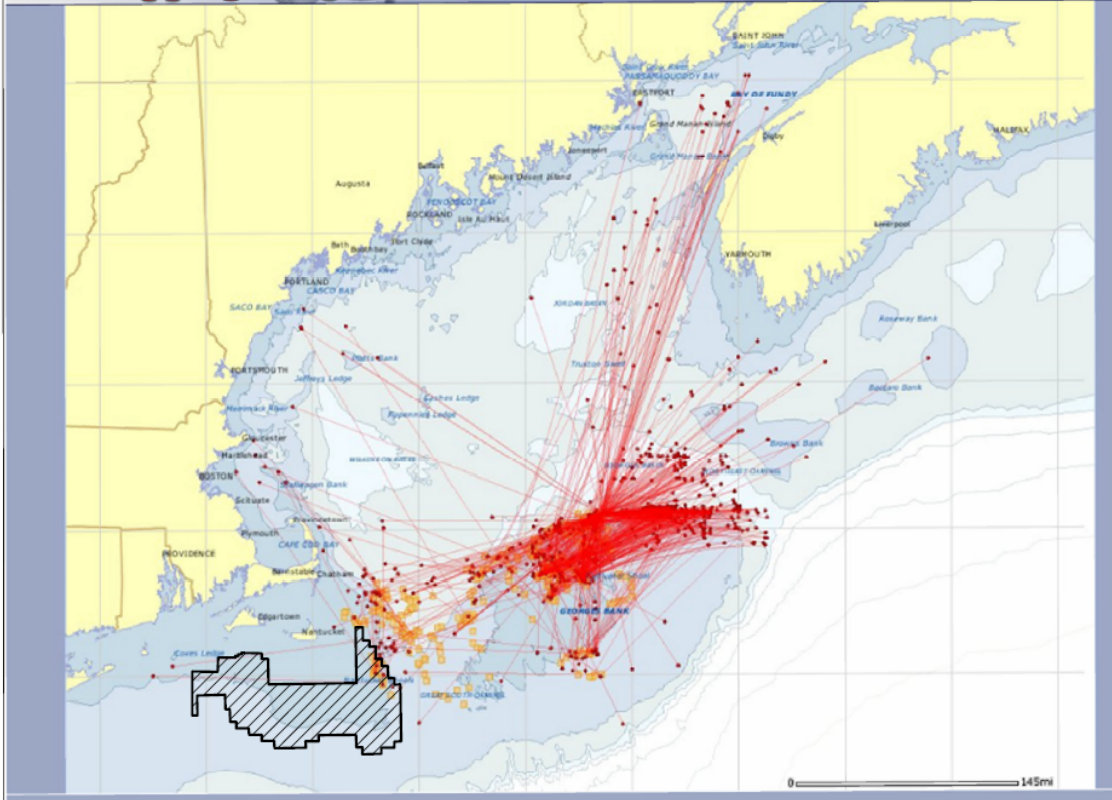


GB3 Station: 17 Quadrat: 1 Temperature: 7.23°C Depth: 42.04 Fathom 40.442425N 69.296777W 9:51:15.000 AM 5/19/2017

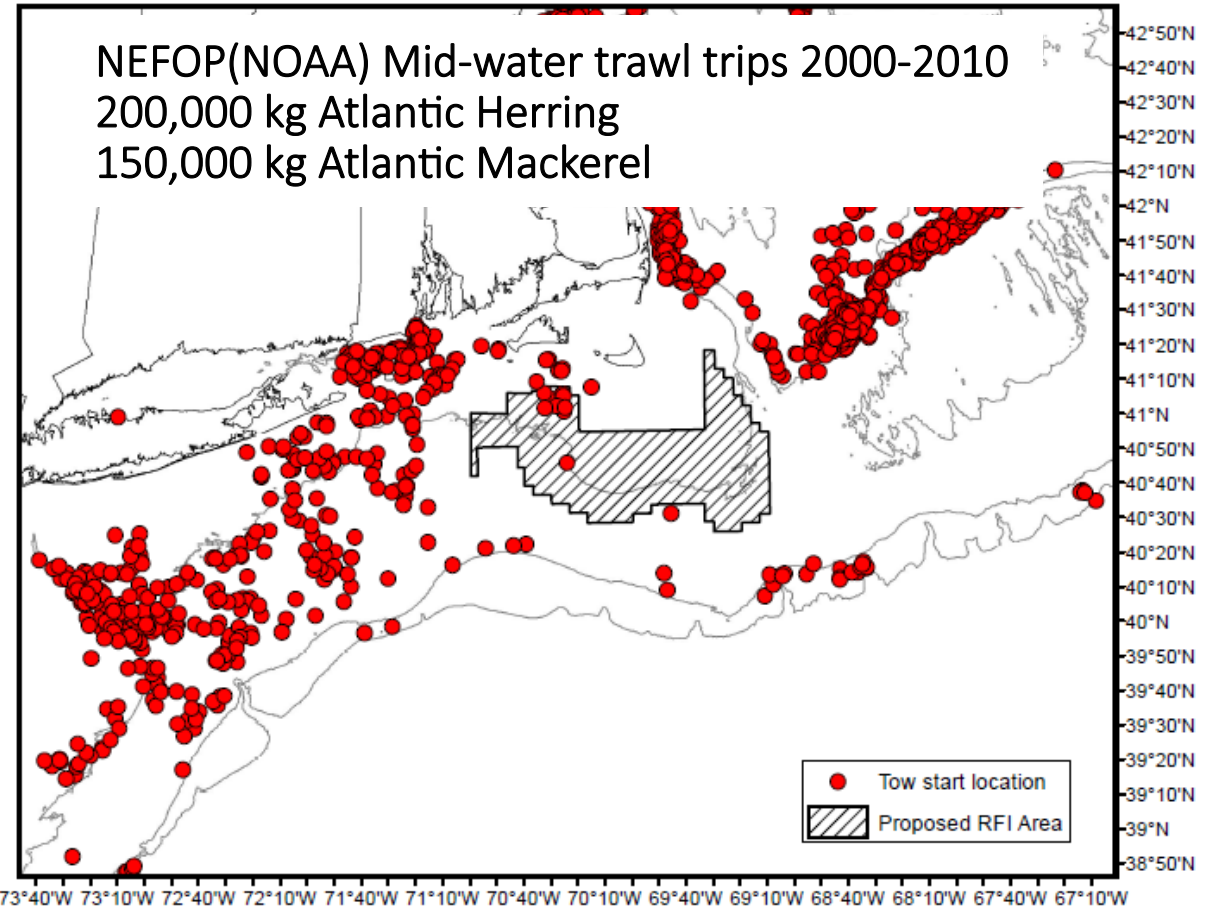


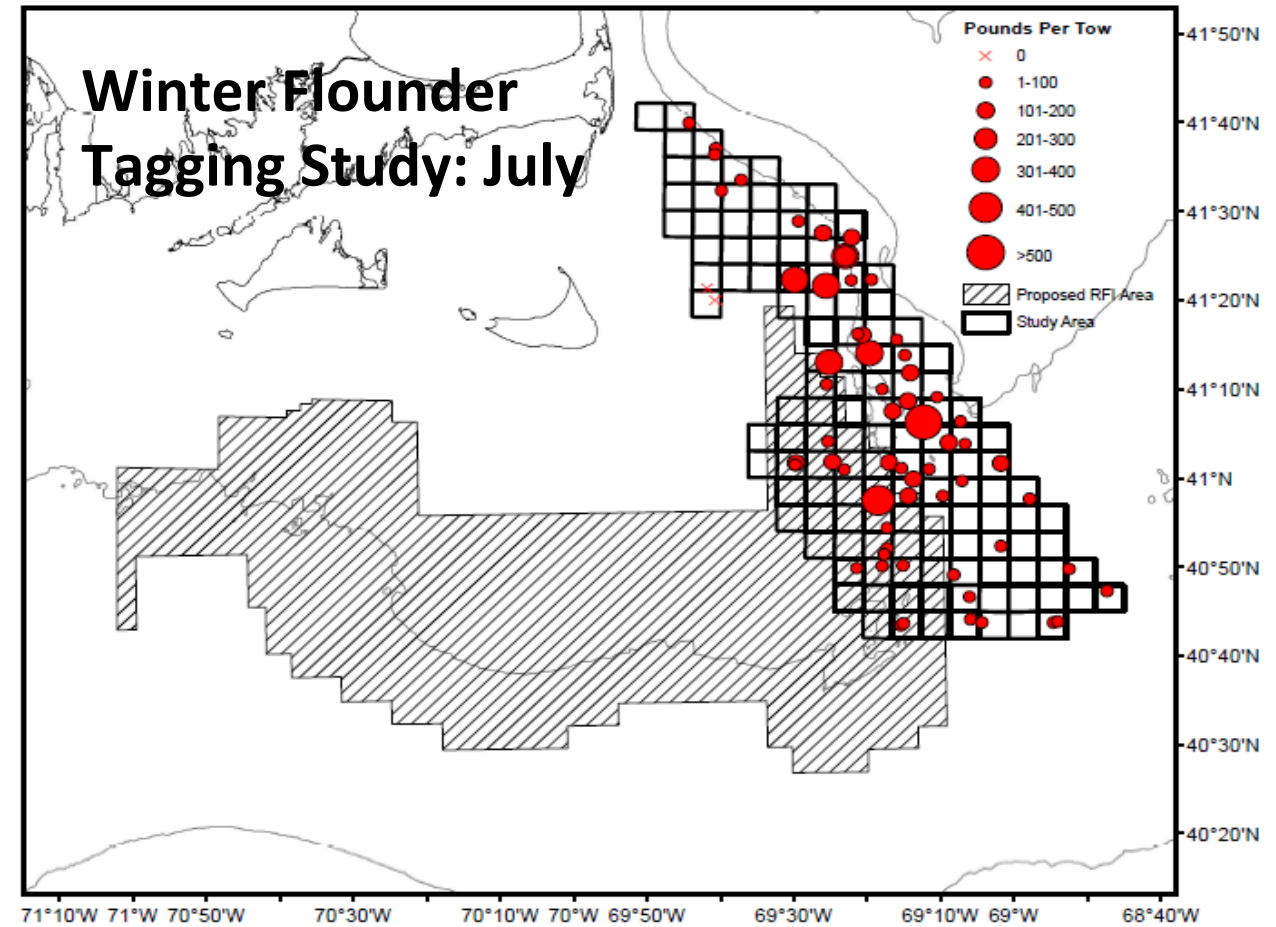
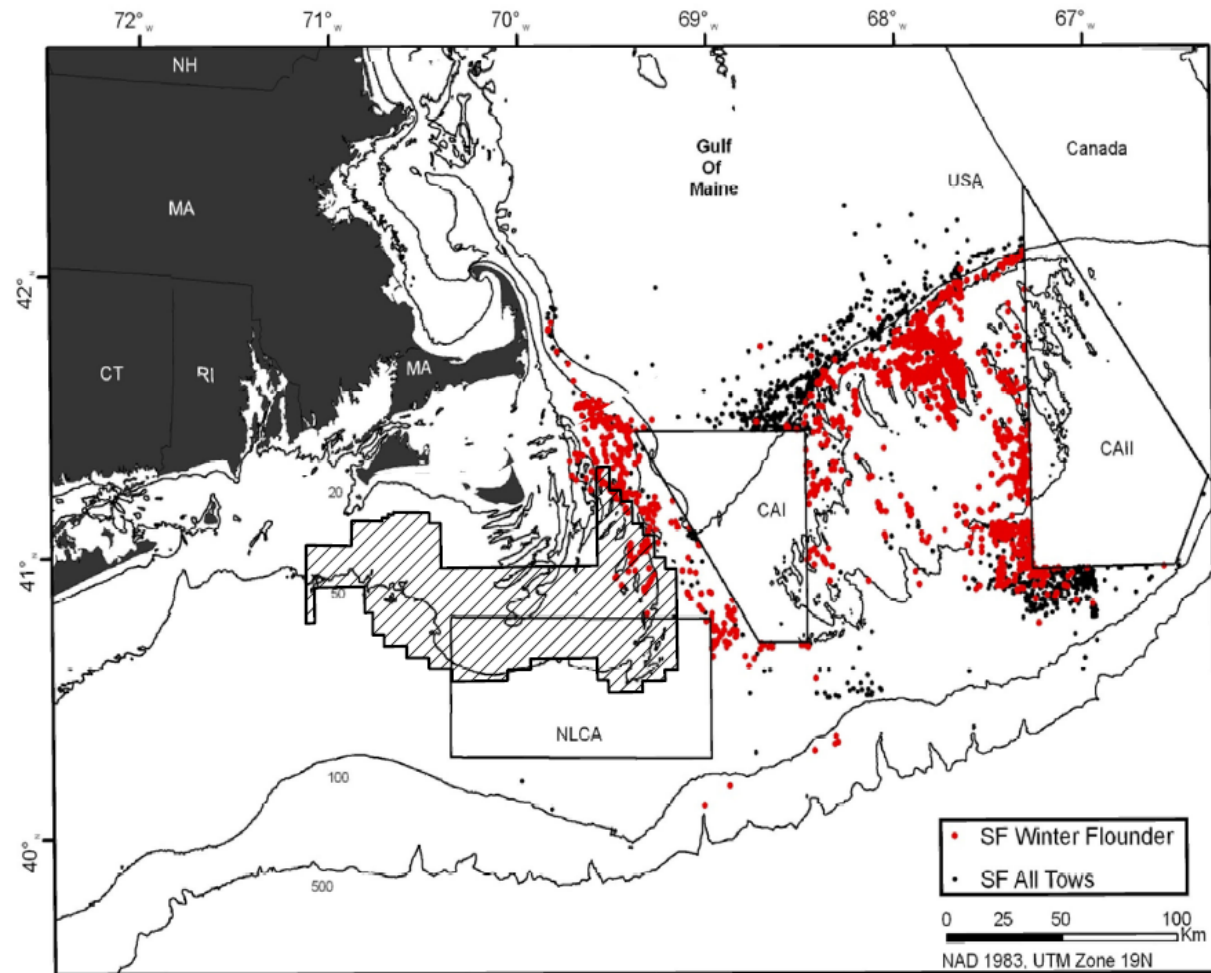


Northeast Regional Cod Tagging Program



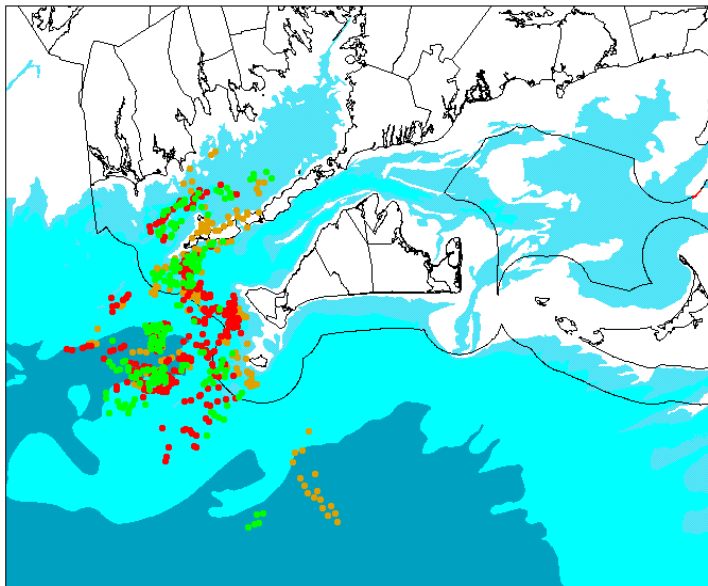
NEFOP(NOAA) Mid-water trawl trips 2000-2010
 200,000 kg Atlantic Herring
 150,000 kg Atlantic Mackerel





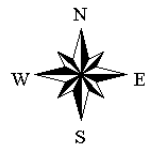


2000 - 2002



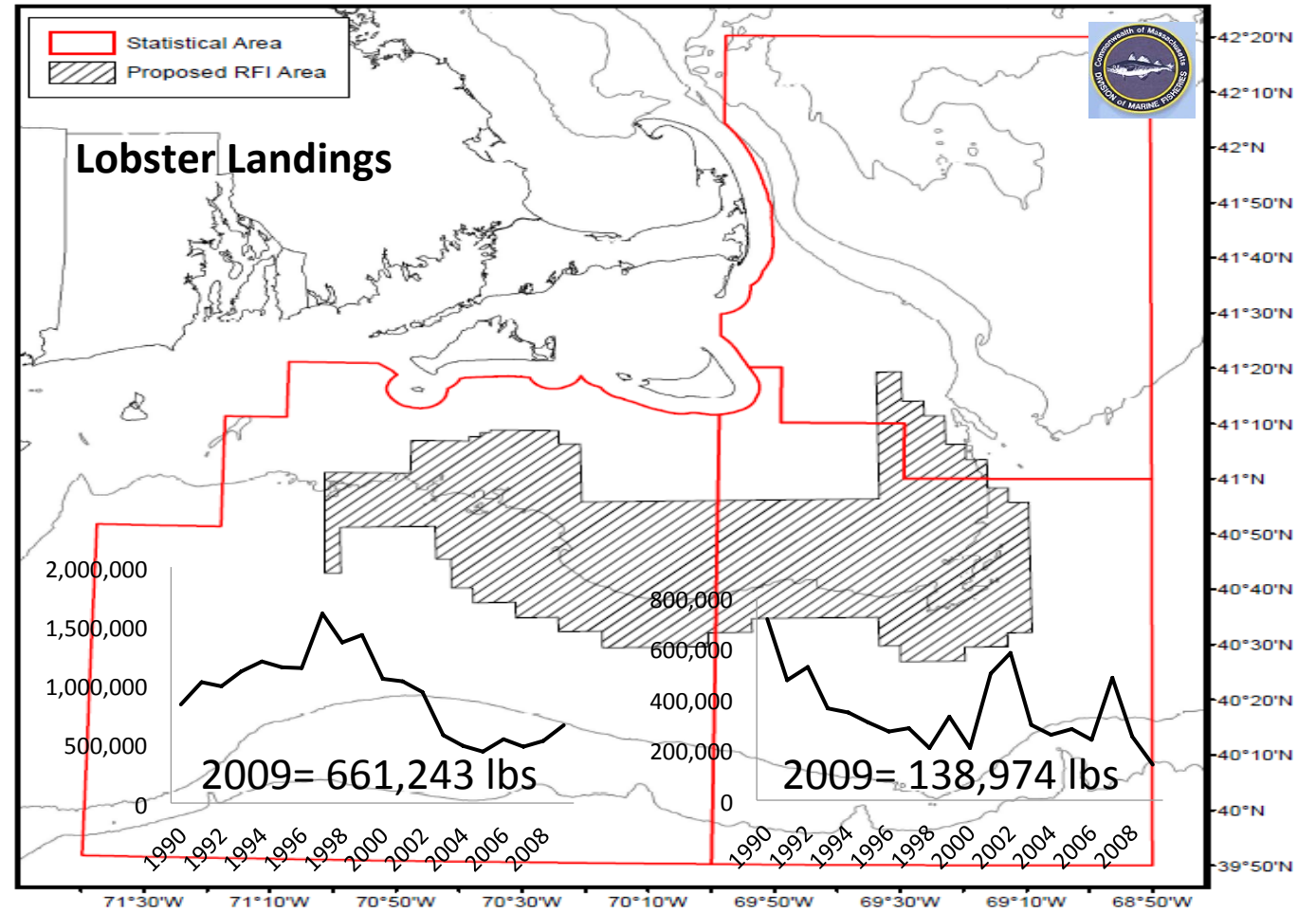
5 0 5 10 15 20 25 30 35 40 Miles

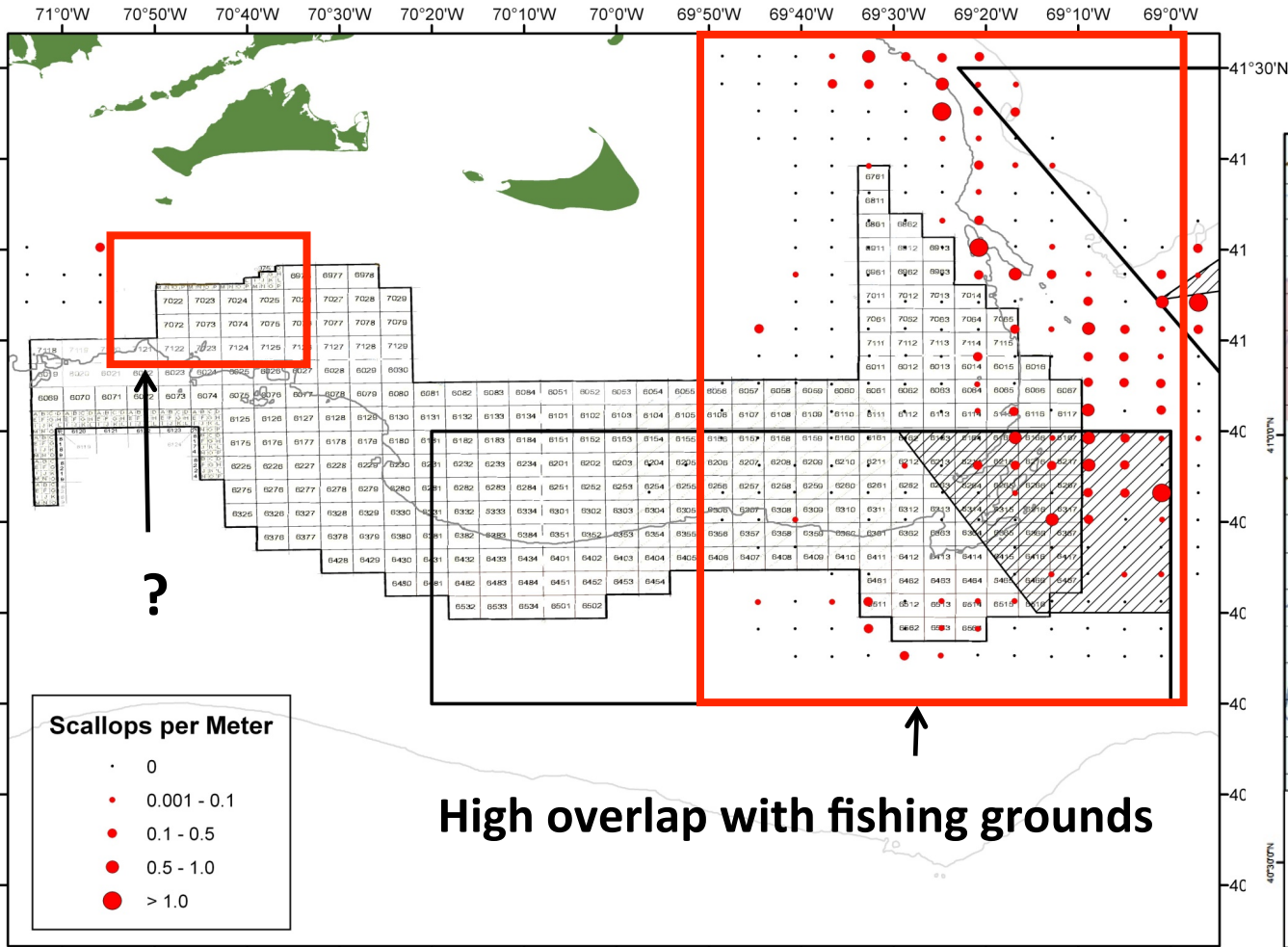
- 2000.shp
- 2001.shp
- 2002.shp
- MA Territorial Waters
- MA Town Boundaries
- Bathymetry - 250K scale
- Above -15m
- 15m to -25m
- 25m to -40m
- 40m to -90m
- 90m to -200m
- Below -200m



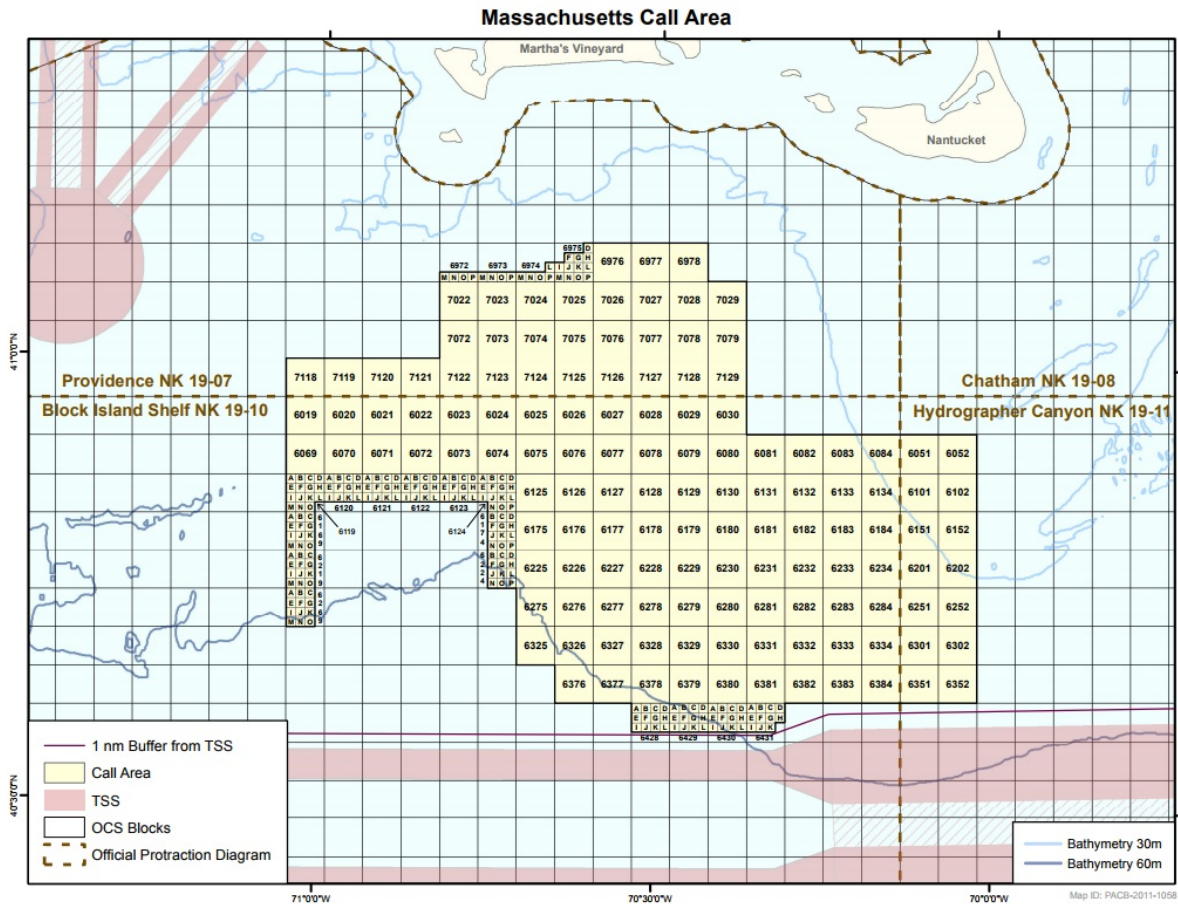
2003

Landings dropped 50%
Shift in fishing effort offshore





Result of Offshore Wind Fisheries Working Group





Blue Economy Initiative Framework

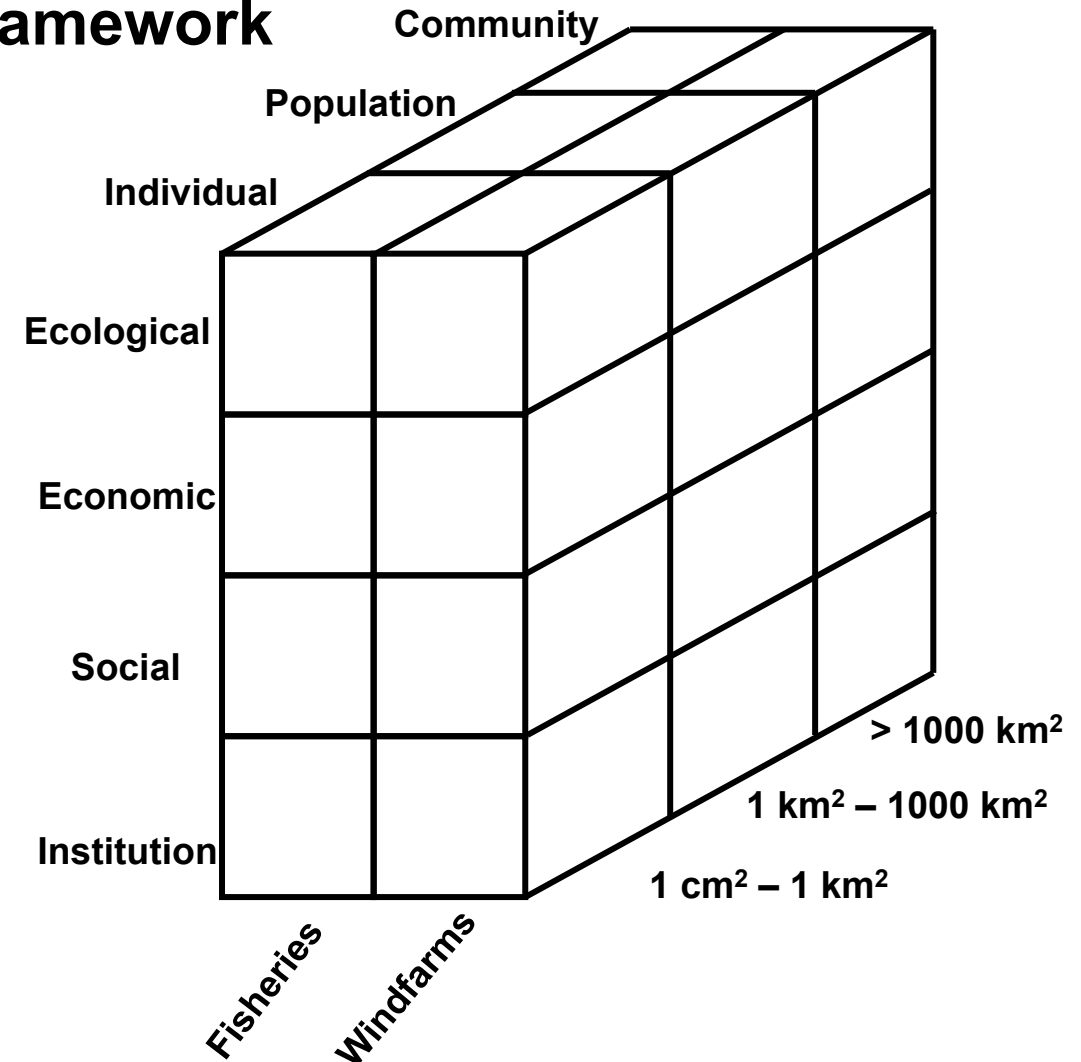
A framework for scenario comparison
(Stephenson et al in prep.)



Management options

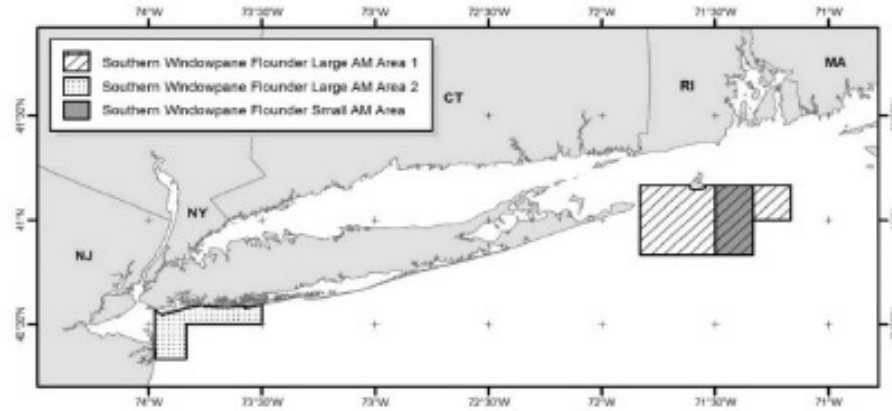
	Scenario A	Scenario B	Scenario C
Ecological: productivity and trophic structure; biodiversity; habitat and ecosystem integrity			
Economic: economic viability and prosperity; sustainable livelihoods; distribution of access and benefits, regional economic benefits to community			
Social: Health and well-being; sustainable communities; ethical fisheries			
Institutional: legal obligations including to indigenous peoples; good governance structure; effective decision-making process			

Scenarios may be compared in several ways...relatively, qualitatively or quantitatively

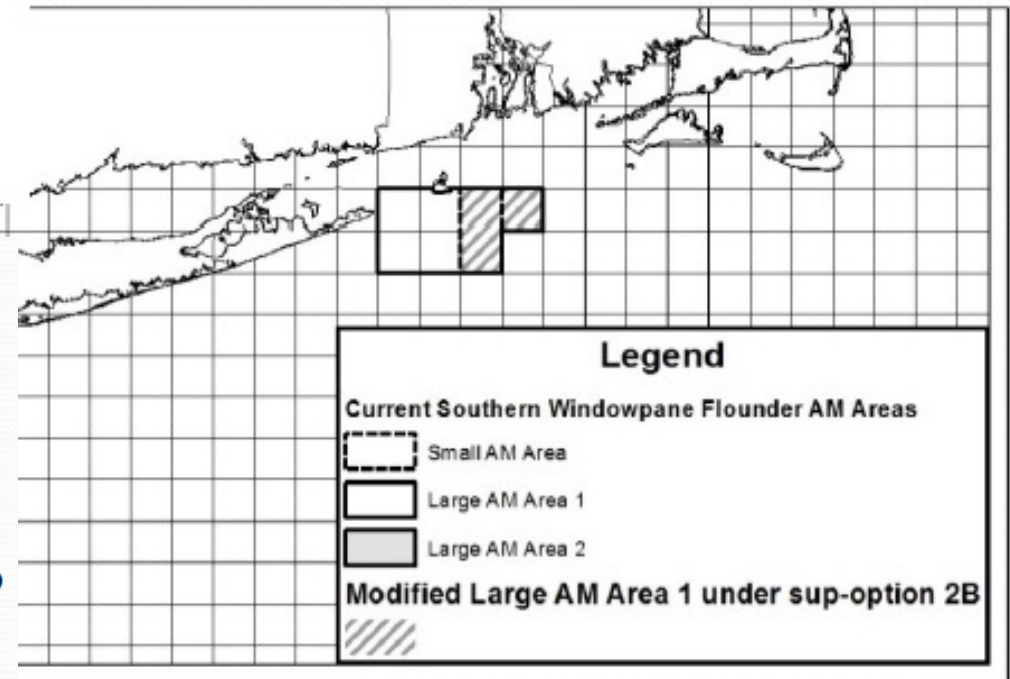




No Action



Option 2/Sub-Option 2B



Southern Windowpane Flounder Accountability Measures for Large-Mesh Non-Groundfish Fisheries

Option 1: No Action

Option 2/Sub-Option 2A: Extension of FW 52 provisions to large-mesh non-groundfish trawl fisheries

